

Bookcases

Kyoto



Kyoto falls among the original and prominent metal bookcases that attract attention. It consists of a vertical metal structure that embraces horizontal wooden shelves.



FREESTANDING DOUBLE-SIDED BOOKCASE

Kyoto is often used freestanding from the center of the room, as it is a freestanding double-sided bookcase, perfect for admiring from any angle. However, it is at ease and enhances the room even when placed on the wall.



BOOKCASE WITH THREE OR FOUR SHELVES

The Kyoto bookcase is available with three or four shelves, in different widths. The structure is always metal, with a right and left version of the vertical elements, and has shelves in wood, lacquer or textured.



ORIGINAL BOOKCASE MADE OF WOOD AND METAL

The original structure of the Kyoto bookcase, as important as it is, maintains a formal cleanliness despite the contrasts. There is a contrast of movement, due to the vertical elements, which are partly functional and partly aesthetic, and there is a textured one, created by the vertical metal part, in different finishes, compared to the shelves in veneer or lacquer.



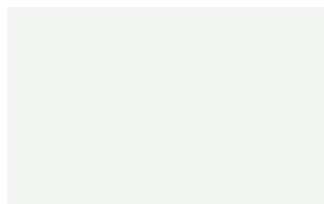
FINISHES

How would you like to customize your Kyoto bookcase with its original metal frame? Look and choose the finishes that best match the space you are furnishing.

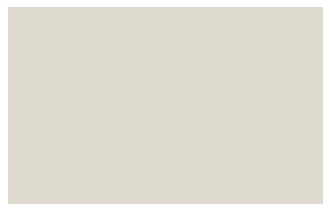
Lacquers

MATT LACQUERS

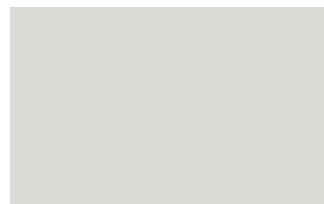
Matt lacquers



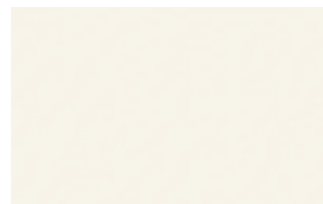
Bianco



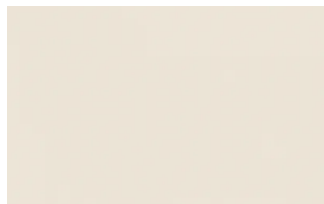
Ghiaccio



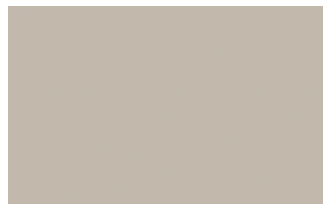
Sabbia



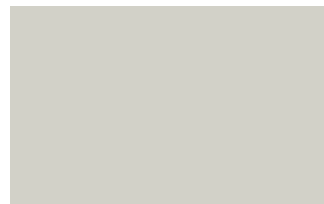
Panna



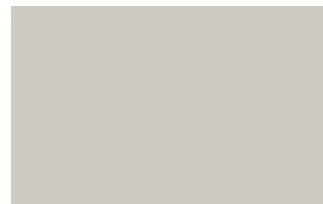
Crema



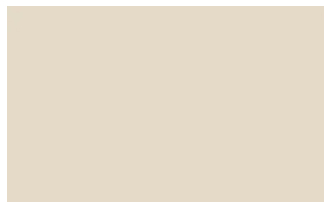
Grigio seta



Grigio perla



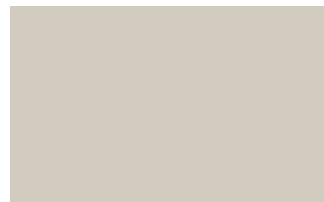
Light grey



Fior di loto



Giallo senape



Tortora



Canapa



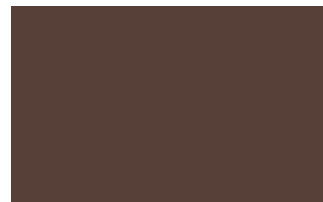
Corda



Dark grey



Terracotta



Moka



Rosso bordeaux



Rosso



Rosa cipria



Bruciato



Carta da zucchero



Grigio blu



Verde pallido



Verde malva



Grigio aston



Celeste



Turchese



Grigio Garda



Blu cobalto



Oceano



Grigio antracite

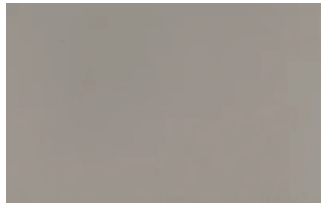


Nero

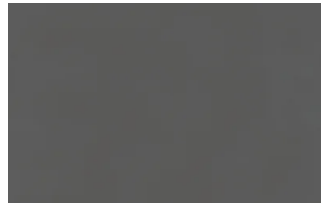
Metallic matt lacquers



Titanio



Nichel



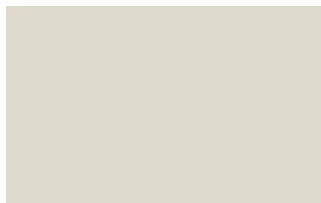
Piombo

GLOSSY LACQUERS

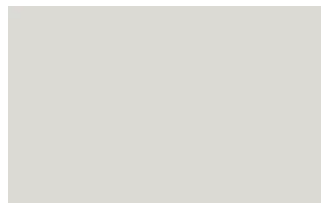
Glossy lacquers



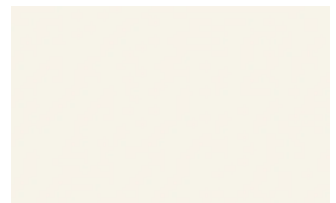
Bianco



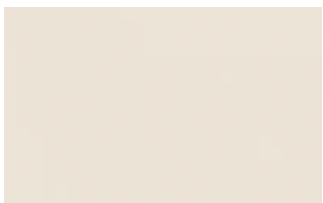
Ghiaccio



Sabbia



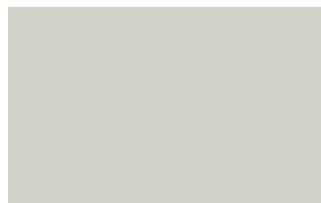
Panna



Crema



Grigio seta



Grigio perla



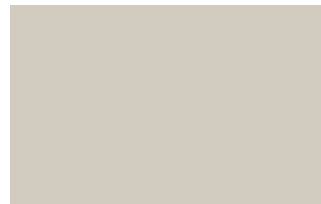
Light grey



Fior di loto



Giallo senape



Tortora



Canapa



Corda



Dark grey



Terracotta



Moka



Rosso bordeaux



Rosso



Rosa cipria



Bruciato



Carta da zucchero



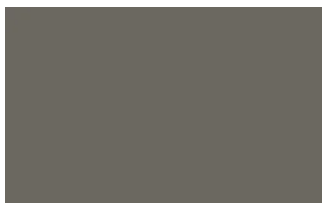
Grigio blu



Verde pallido



Verde malva



Grigio aston



Celeste



Turchese



Grigio Garda



Blu cobalto



Oceano



Grigio antracite



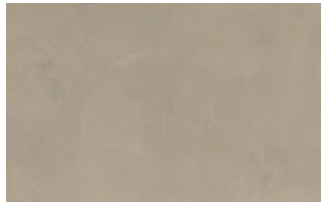
Black

UP SURFACES

Concrete effect lacquers



Perla



Argilla



Grafite

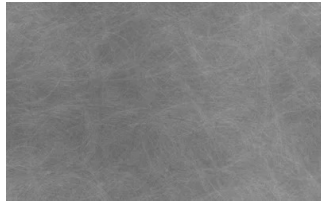


Lava

Metal effect lacquers



Nichel



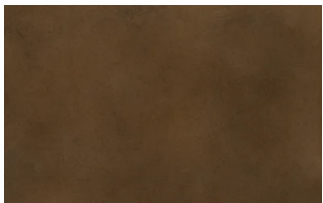
Piombo



Titanio



Ossido ottone

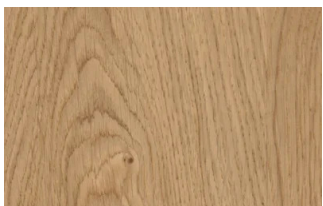


Ossido bronzo

Wood

WOODS 1

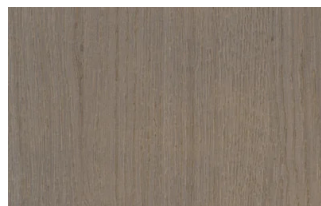
Woods 1



Natural oak



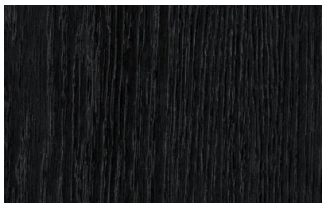
Visone oak



Cenere oak



Castoro oak



Carbone oak

WOODS 2

Woods 2



Canaletto walnut



Heat-treated oak

Textured finishes

TEXTURED FINISHES

Textured finishes



Heat-treated oak



Avana



Carbone oak



pietra piacentina

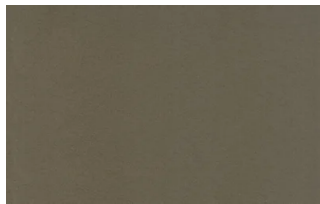
Metals

METALS 1

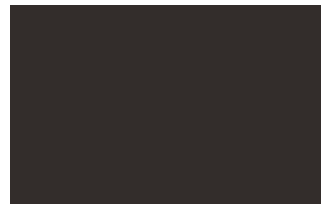
Metals 1



Black



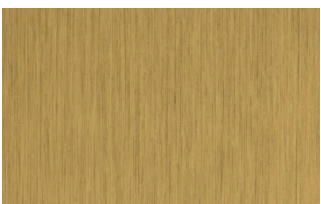
Titanium



Brown

METALS 2

Metals 2



Antiqued brass