

dallagnese

Vetri laccati - Lacquered glasses

Vetri laccati - Lacquered glasses

Descrizione

Description

Alla raffinatezza del vetro, alla sua luminosità, alla sua ecosostenibilità, poiché si ottiene da componenti naturali ed è 100% riciclabile, il processo di laccatura dona al vetro un ulteriore vantaggio: la notevole possibilità di scelta fra colorazioni diverse per ottenere ambienti a misura del proprio gusto.

In addition to the refinement of glass, its brightness, and its eco-sustainability, since it is obtained from natural components and is 100% recyclable, the lacquering process gives glass an additional advantage: the remarkable possibility of choosing among different colours to obtain environments to suit one's taste.

Per una corretta installazione dei piani in cristallo devono essere rigorosamente utilizzati siliconi neutri trasparenti non acetici, per evitare la corrosione della superficie colorata.

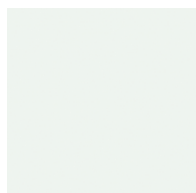
Per la pulizia consigliamo l'utilizzo di un panno morbido e di detergenti liquidi neutri non abrasivi. Il vetro è un materiale molto duro e resistente ma allo stesso tempo fragile e può essere danneggiato da forti colpi, o cadute di oggetti su di esso. Consigliamo di evitare l'utilizzo di abrasivi e prodotti come ad esempio: trielina, acetone e solventi in genere.

For proper installation of the crystal tops must be strictly used neutral transparent not acetic silicones to prevent corrosion of the lacquered surface.

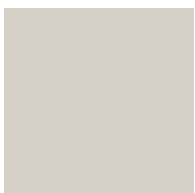
For daily cleaning of a crystal top we recommend to use a damp cloth and with neutral non-abrasive liquid detergent. Glass is a very hard and strong material but at the same time it is fragile and it can be damaged by strong strikes or falling objects on it. We recommend to avoid the use of abrasive products and products such as: trichloroethylene, acetone and solvents.

Varianti tinta

Color variants



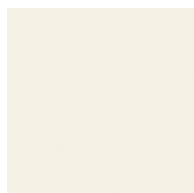
9003 Bianco



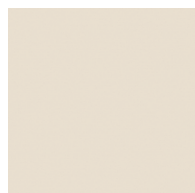
9002 Ghiaccio



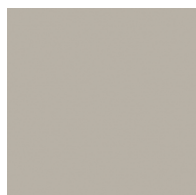
100 Sabbia



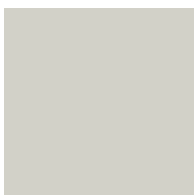
9010 Panna



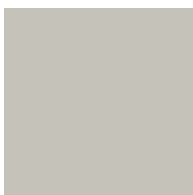
9001 Crema



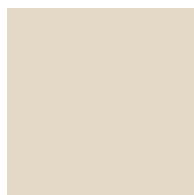
7044 Grigio seta



68 Grigio perla



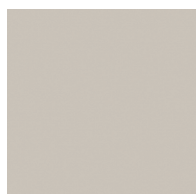
71 Light grey



1013 Fior di loto



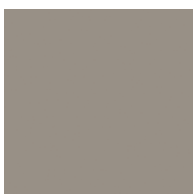
101 Giallo senape



63 Tortora



62 Canapa



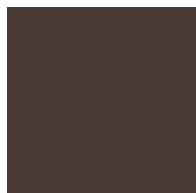
61 Corda



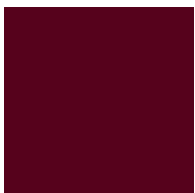
72 Dark grey



74 Terracotta



73 Moka



3005 Rosso bordeaux



3003 Rosso



102 Rosa cipria



173 Bruciato



76 Carta da zucchero



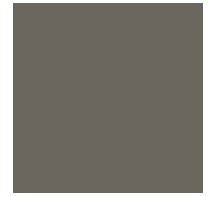
7031 Grigio blu



190 Verde pallido



103 Verde malva



7039 Grigio aston



107 Celeste



104 Turchese



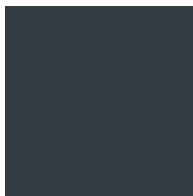
246 Grigio Garda



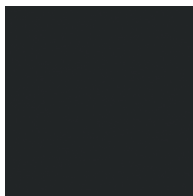
106 Blu cobalto



105 Oceano



7016 Grigio antracite



9017 Nero