

Chairs

# Le Mans



The comfortable and enveloping Le Mans chair is the brainchild of Matteo Zorzenoni, inspired by the shells of racing car seats. It has a fixed metal base with four legs or central and swivel.



## CHAIR WITH FIXED METAL FRAME

From the automotive industry, in addition to the wrap-around shape of the seat, the Le Mans chair version with metal legs also takes up TIG welding. It is used to achieve a top-quality, well-cleaned exposed joint, added with brass so that it becomes even stronger.



## CHAIR WITH CENTRAL SWIVEL BASE

The Le Mans version chair with a central swivel metal base, on the other hand, is perfect for the home office. It is available in black finish.



## FABRIC, LEATHER OR ECO-LEATHER CHAIR

The wide, comfortable and enveloping seat of Le Mans can be upholstered in various fabric, leather or faux leather finishes. For its inside, we use a single cut of the chosen material, which is then hand-quilted, in a completely handcrafted way, to make it adhere well to the seat. The back of the backrest can also be in a different material or finish than the front and, in the case of faux leather, woven.





## FINISHES

See what finishes are available for the Le Mans chair and start imagining what its version will look like to furnish your space.

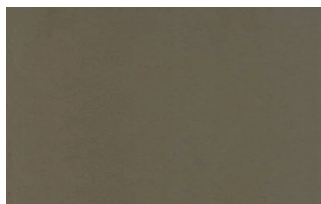
### Metals

#### METALS 1

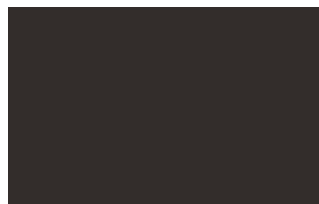
Metals 1



Black



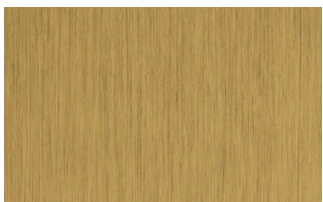
Titanium



Brown

#### METALS 2

Metals 2



Antiqued brass

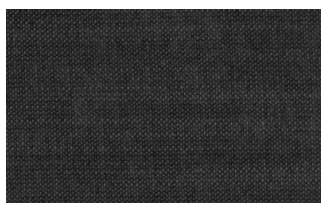
### Fabrics

#### BASIC

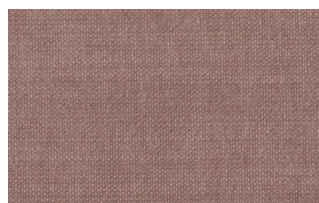
X370



3



4



9



10





23

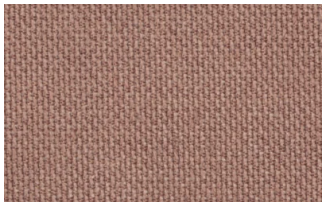


29



32

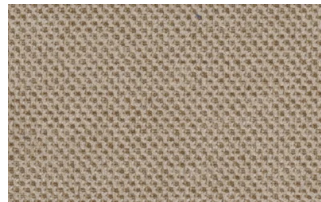
## Relax



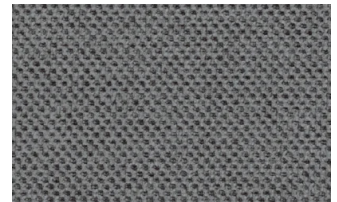
5



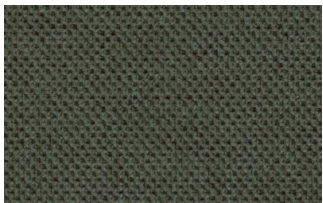
20



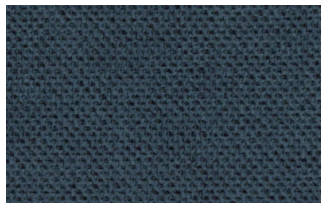
25



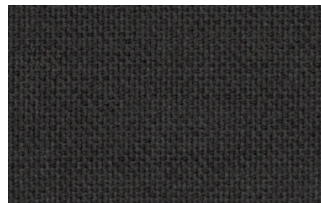
53



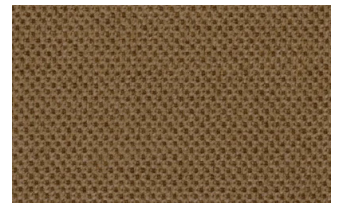
62



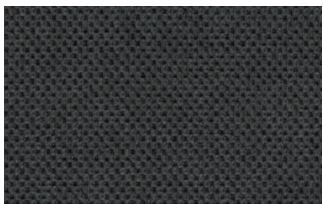
66



74



81

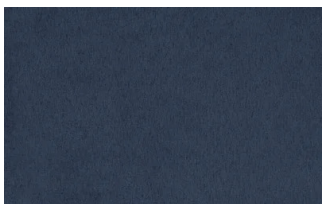


96

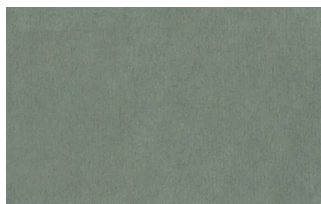


103

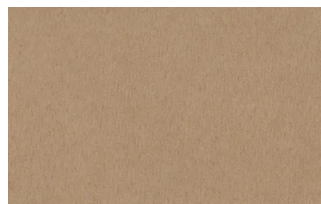
## Divina



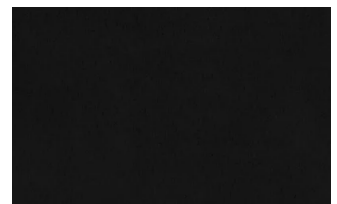
15



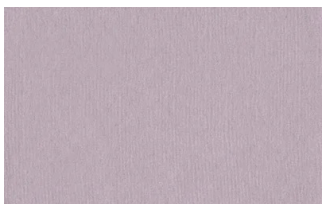
19



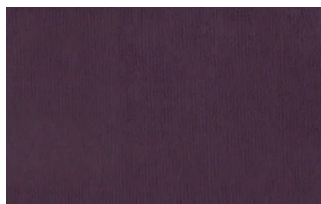
21



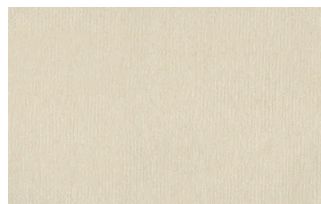
22



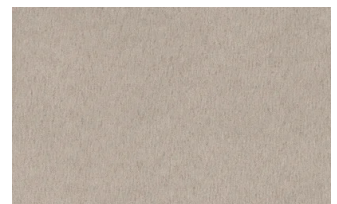
34



46



49



50





76



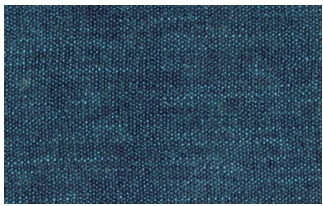
88



561

## START

### Scoop



6



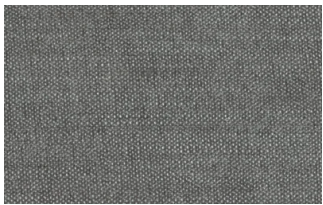
7



9



25



31



59



104

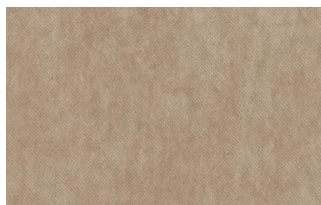


561

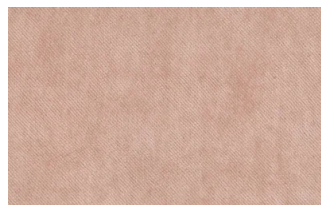
### Stropiccio



4



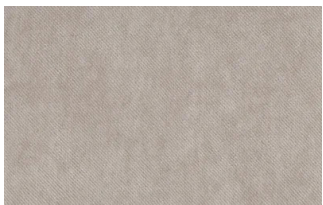
6



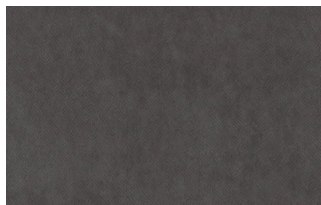
8



17



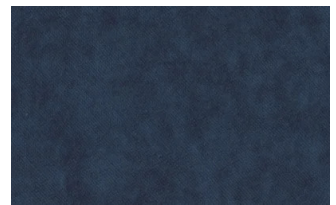
19



20



22



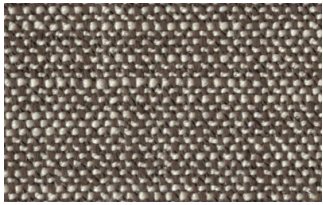
23



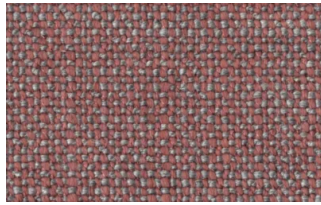
30

### Nodone





1302



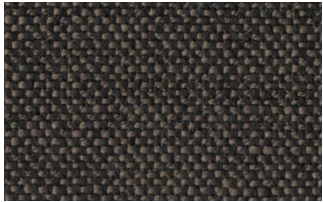
1307



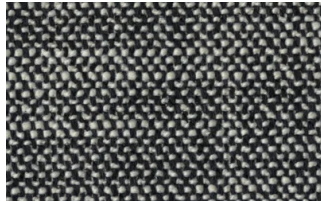
1308



1309



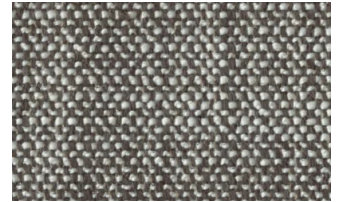
1310



1311

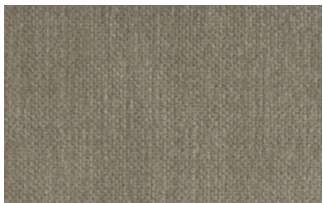


1313

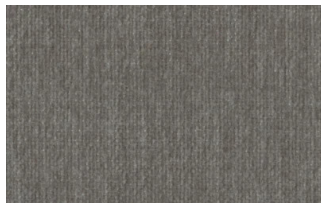


1314

## R Flair



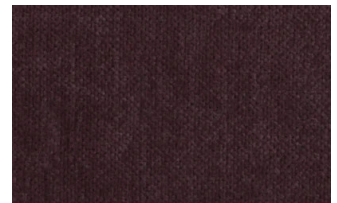
P321-6200-039



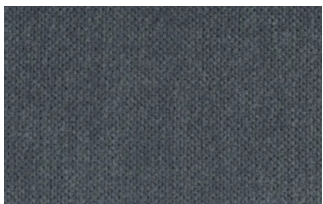
P321-6200-901



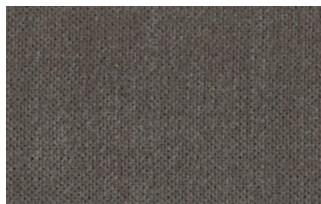
P321-6300-419



P321-6300-503



P321-6300-988



P321-6300-996

## EXTRA

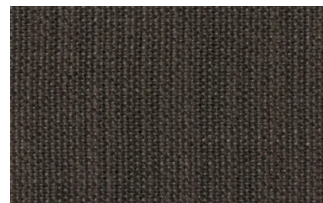
### Anice



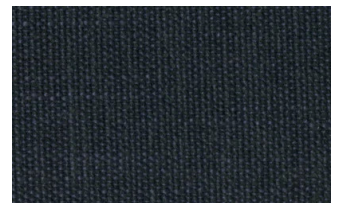
1



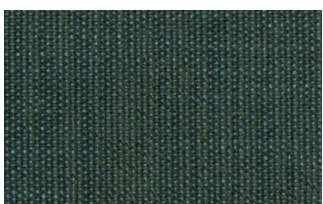
2



3



4



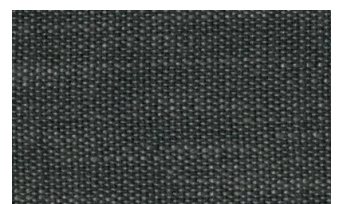
5



6



7



8





9

## Lovely



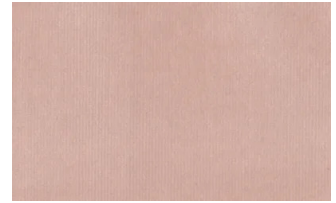
6



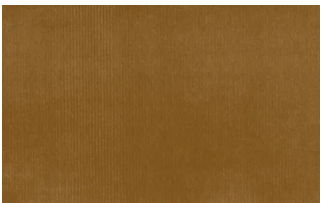
10



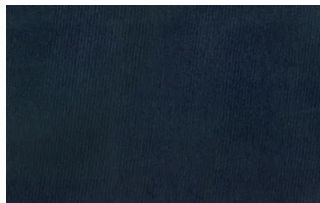
19



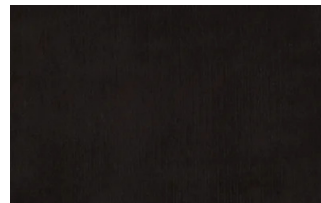
22



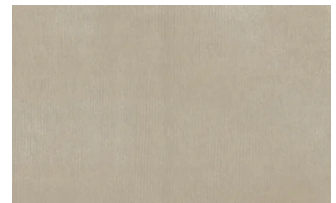
27



31



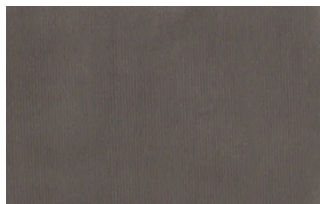
36



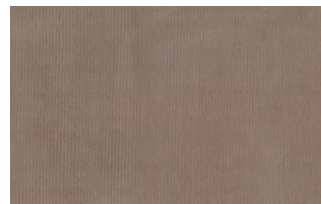
102



113



200

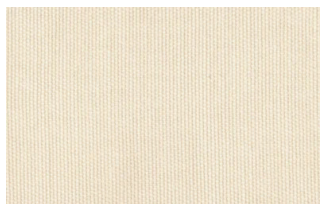


202

## Cosme



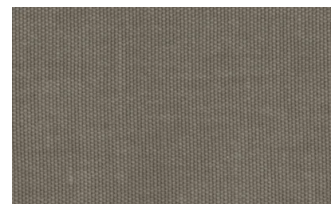
e200



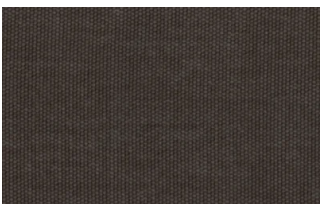
e202



e205



e206



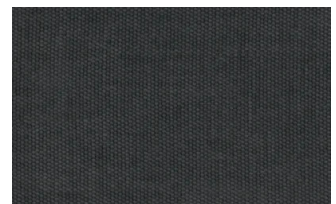
e209



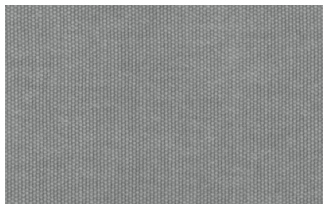
e220



e232



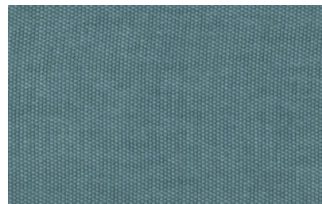
e234



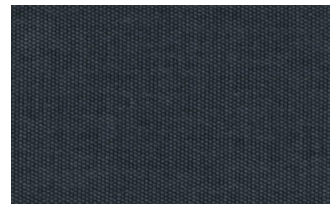
e236



e240

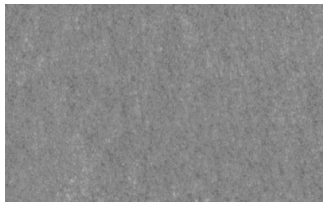


e241

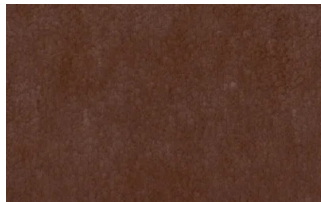


e244

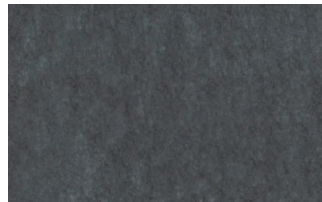
## Soda



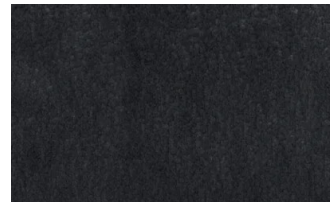
29



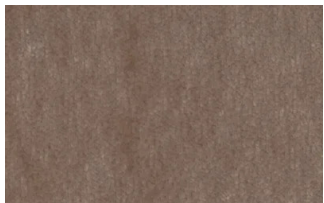
30



39



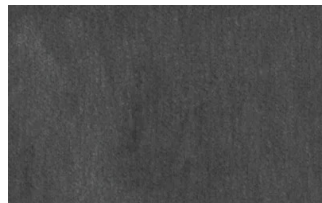
41



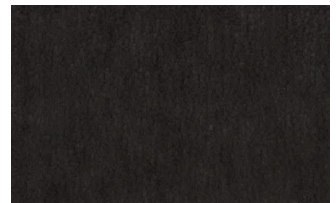
56



62



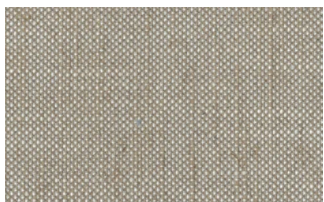
74



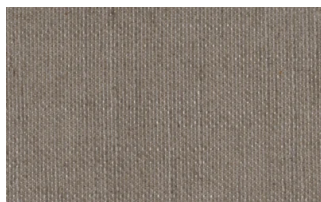
104

## LIGHT

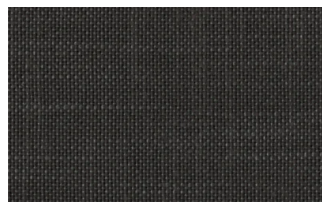
### Lima



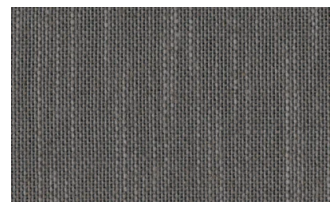
2



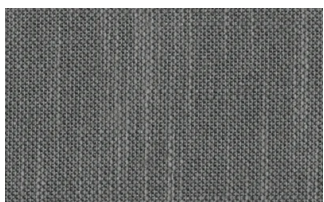
5



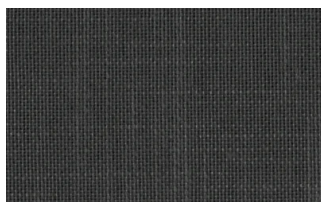
10



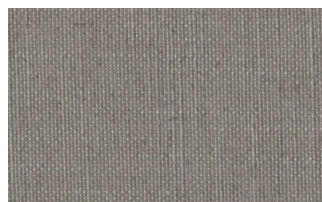
12



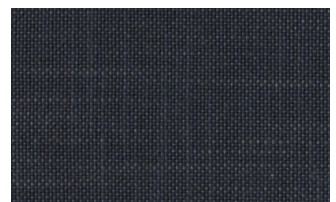
14



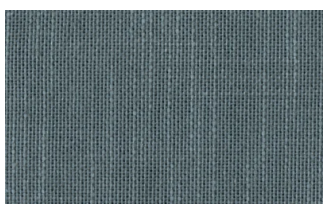
16



23



29



31



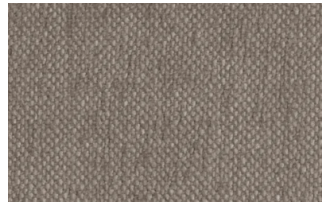
43

### Mimi





A3004



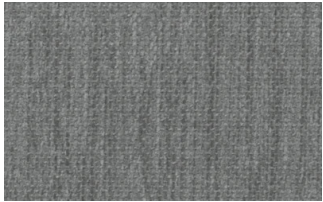
A3005



A3006



A3014



A3018

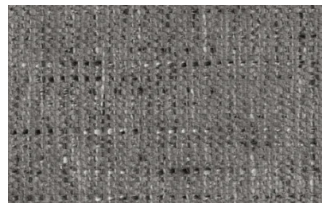


A3023

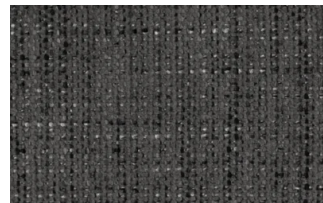
## Memphis



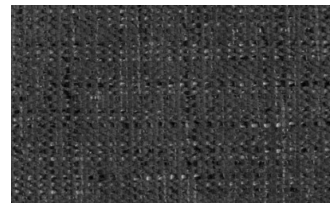
1



6



10



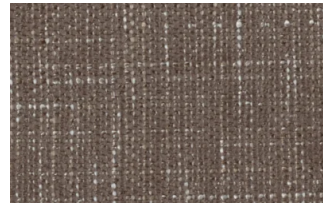
11



13



14



15



16

## SUPER

### Hylemt



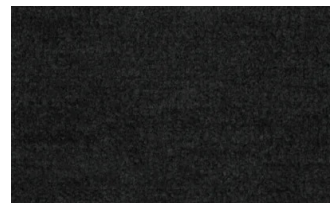
25



102



109



117



121



204



207

### Axum

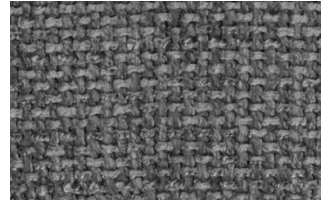




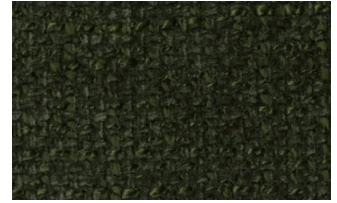
3



11



12



18



21



23



29

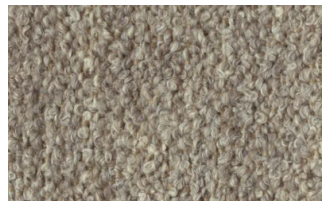


30

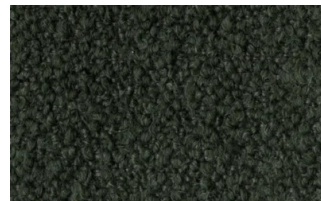
## Barnum Unito



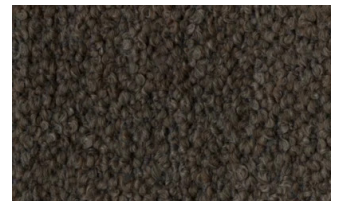
1 bianco



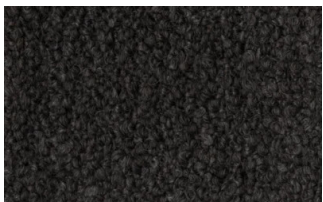
2 corda



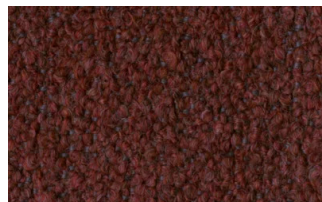
9 bosco



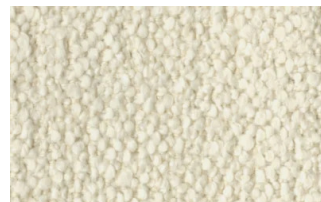
10 piombo



13 lavagna



23 bruciato

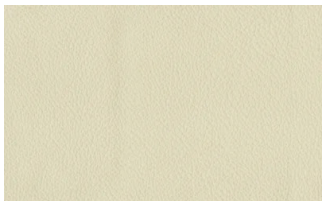


24 lana

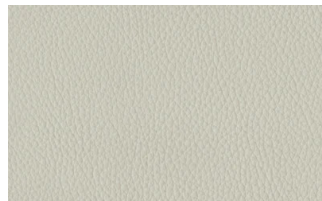
## Leathers

### K LEATHERS

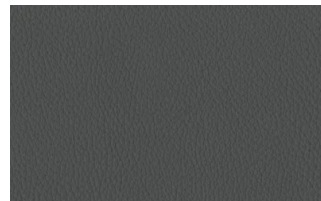
#### Leather



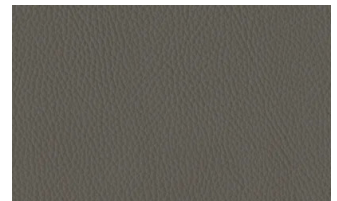
200



202



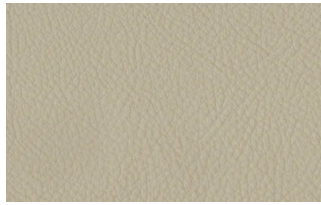
204



206



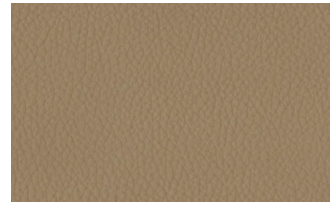
207



208



211



214



217



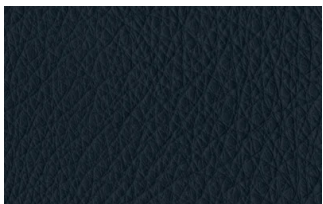
224



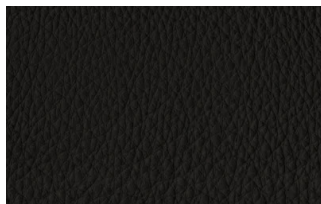
228



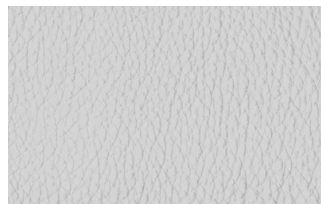
234



274



298



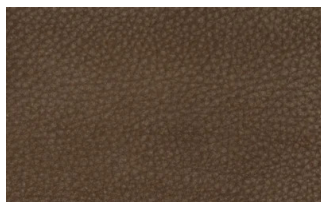
301

## W LEATHERS

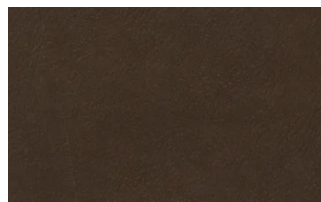
### Nabuk



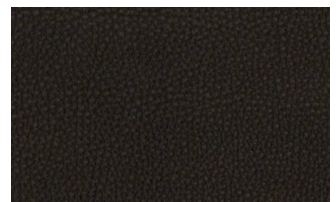
Creta



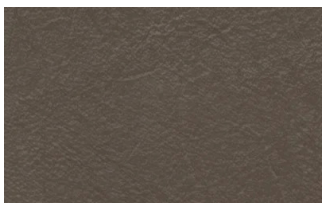
Camel



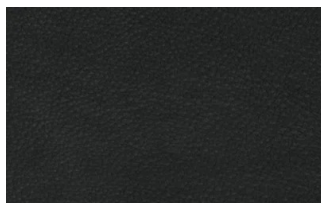
marrone



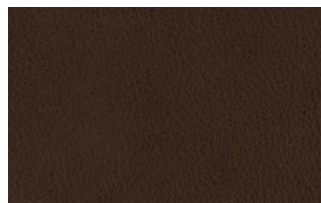
Testa di moro



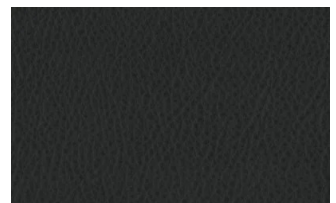
Seppia



Black



Hard leather

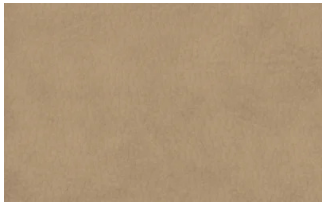


Grigio

## Ecoleathers

## EXTRA ECO-LEATHERS

### Vintage eco-leather



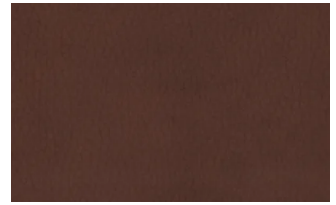
2



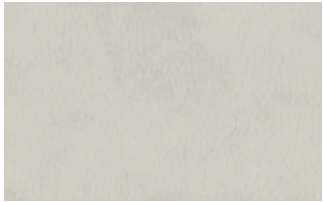
3



3 intreccio



4



6



7



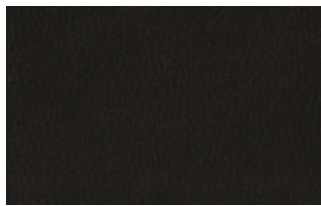
7 intreccio



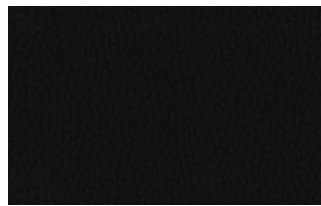
8



8 intreccio



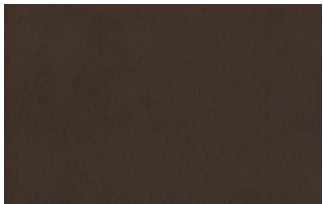
9



14



19



22