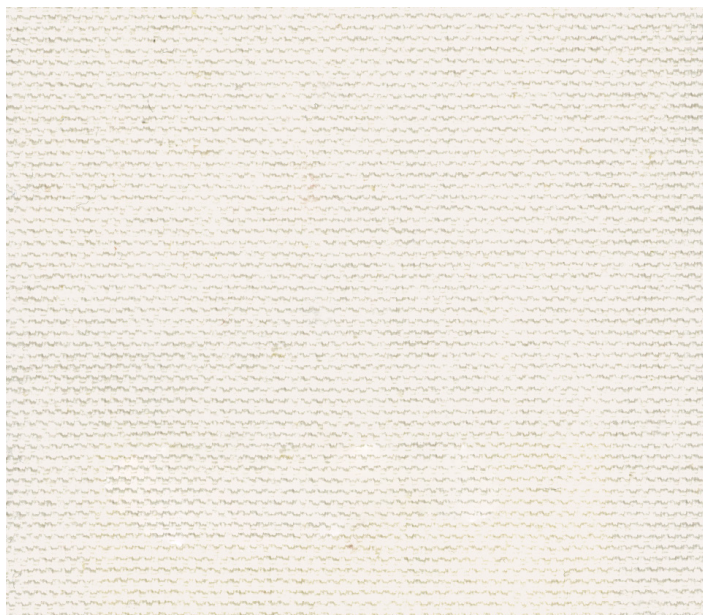


# dallagnese

## Cosme

Cat. Extra



<b>Composizione</b> Composition	100%CO
<b>Martindale</b> Martindale	25.000
<b>Pilling</b> Pilling	5
<b>Altezza</b> Width	140 cm
<b>Peso</b> Weight	300 gr/ml
<b>Solidità alla luce</b> Light fastness	4

### Lavaggio

Washing



### Cura e manutenzione

Care and maintenance

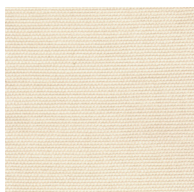
non strizzare o torcere, non stirare al vapore  
do not wring or twist, do not steam iron

### Varianti tinta

Color variants



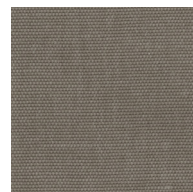
e200



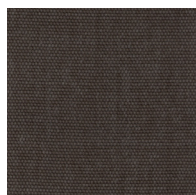
e202



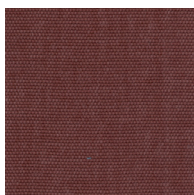
e205



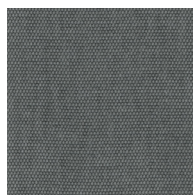
e206



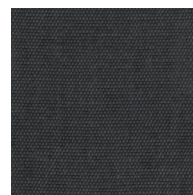
e209



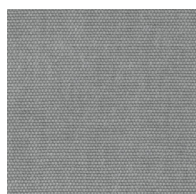
e220



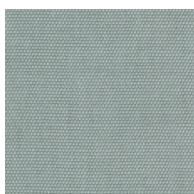
e232



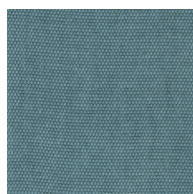
e234



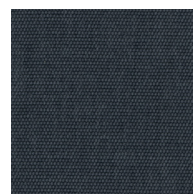
e236



e240



e241



e244

### Descrizione

Description

Tessuto in cotone organico.  
Trama e ordito sono lavorati con gli stessi fili, strettamente, così da definire la tessitura leggibile in modo chiaro nel suo intrecciarsi. Il risultato è piatto e morbido al tatto, con peso leggero, selezionato per chi predilige una scelta 100% naturale.  
Woven from organic cotton.  
Weft and warp are worked with the same threads, tightly, so that the weave is clearly legible in its interweaving. The result is flat and soft to the touch, with light weight, selected for those who prefer a 100% natural choice.