

Fintapelle vintage - Vintage eco-leather

Cat. Extra Ecopelli - Extra Eco-leathers



Composizione

Composition

spalmatura 100%PVC,
supporto 50%PES 50%CO

Martindale

Martindale

50.000

Solidità alla luce

Light fastness

>4

Resistenza la fuoco

Flame retardant

1IM

Cura e manutenzione

Care and maintenance

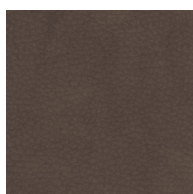
non utilizzare prodotti
aggressivi o abrasivi
do not use harsh or abrasive
products

Varianti tinta

Color variants



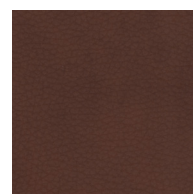
2



3



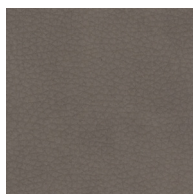
3 intreccio



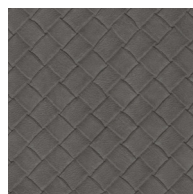
4



6



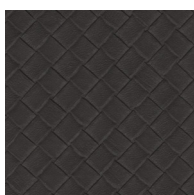
7



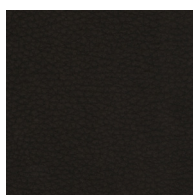
7 intreccio



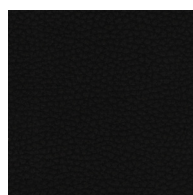
8



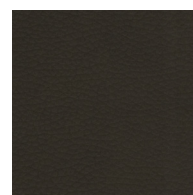
8 intreccio



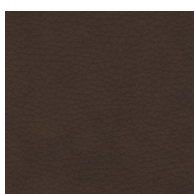
9



14



19



22

Descrizione

Description

Finta pelle dal sapore vissuto. Un trattamento specifico le fa ottenere l'aspetto vintage, come se il colore fosse leggermente consumato, la mantiene piatta e piacevole al tatto. È proposta anche in una versione che simula la lavorazione a intreccio, adatta per i dettagli, come il retro di certe sedie o i giroletti.

In entrambe le versioni è ignifuga, con certificazione europea classe 1IM.

Eco-leather with a lived-in feel. A specific treatment gives it the vintage look, as if the colour were slightly worn, keeps it flat and pleasant to the touch. It is also offered in a version that simulates woven workmanship, suitable for details such as the backs of certain chairs or bed frames.

In both versions it is fire retardant, with European Class 1IM certification.

Ecopelli - Ecoleathers