

Sofas

Milton



The Milton sectional sofa is great for small spaces because it takes advantage of almost the entire seat. In fact, the upholstered part is comfortable with restrained shapes and made even more graceful and elegant by the canneté edging, applied to backs, cushions and armrests.

MILTON SECTIONAL SOFA: MODULARITY

The modularity of the Milton sofa is expressed in stand-alone pieces, such as the two-seater, two-and-a-half or three-seater armchair and sofas, or with the same side modules, including the one-seater, plus the possibility of joining the island or sundial , as well as matching decorative cushions and square ottoman.



MILTON SOFA: DURABILITY

The supporting parts of the Milton sofa are made of durable solid fir and plywood to ensure strength and durability. An essential look is hidden behind the wide selection of fabrics, faux leather and leathers available for the outer covering. The base is made of brown painted metal.



DETAILS WITH AN ARTISANAL FLAVOUR

The Milton sofa has backrests, cushions and armrests featuring a canneté perimeter border that creates a raised decoration. It can be chosen in a wide range of colors, either contrasting or matching.

The foot chosen, painted brown, suits any type of fabric, leather or faux leather, and gives the sofa itself an elegant and prestigious look.



FABRIC SELECTION

The extensive modularity of the Milton sofa also features an extensive finish chart for leather, faux leather and fabric upholstery, in the latter case with completely removable covers. You can also choose matching or contrasting color edging as desired.



FINISHES

Discover now all the fabric, leather or faux leather finishes available to upholster your Milton sofa.

Fabrics

BASIC

X370



3



4



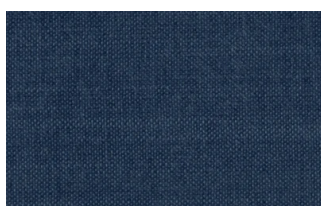
9



10



23



29

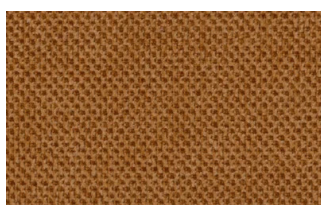


32

Relax



5



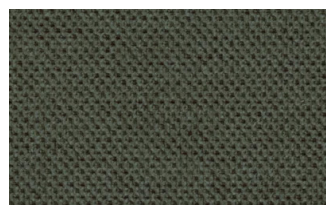
20



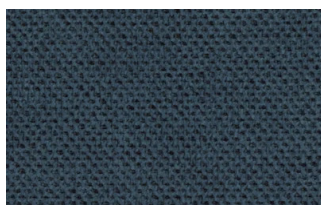
25



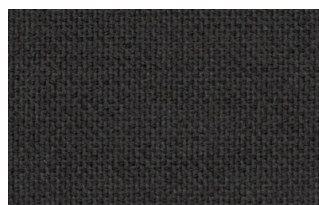
53



62



66



74



81



96



103



15



19



21



22



34



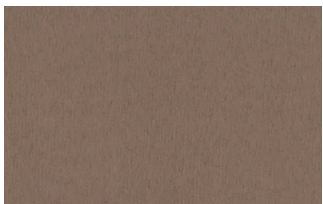
46



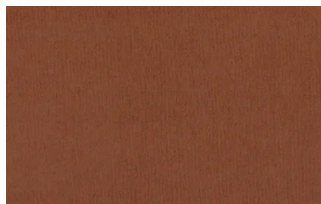
49



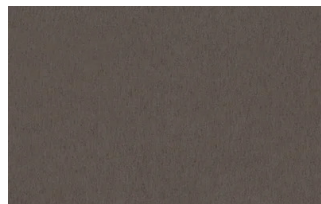
50



76



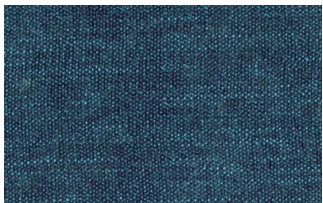
88



561

START

Scoop



6



7



9



25



31



59



104

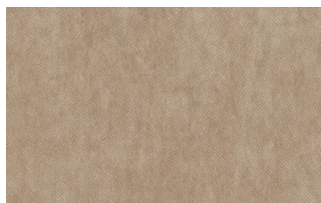


561

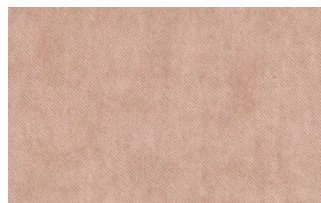
Stropiccio



4



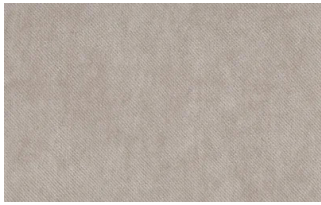
6



8



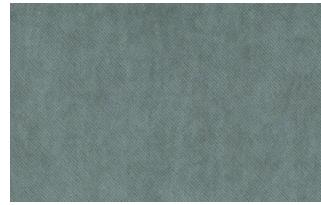
17



19



20



22

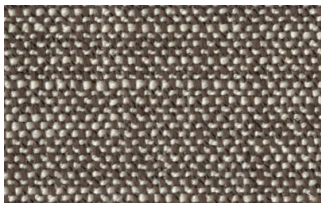


23

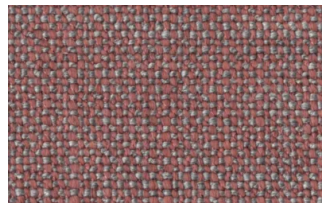


30

Nodone



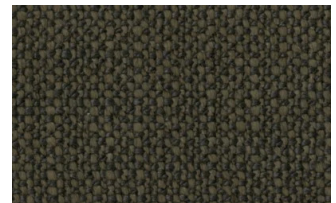
1302



1307



1308



1309



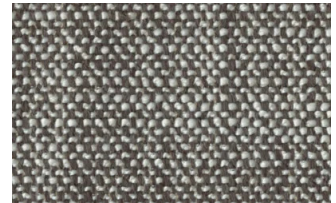
1310



1311

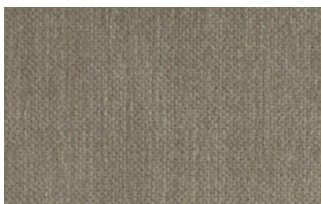


1313

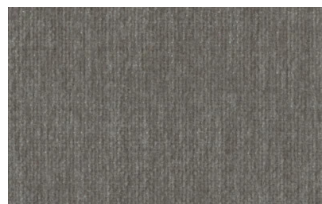


1314

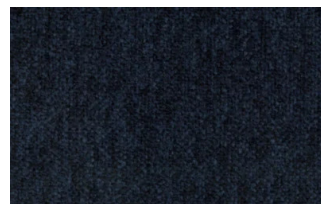
R Flair



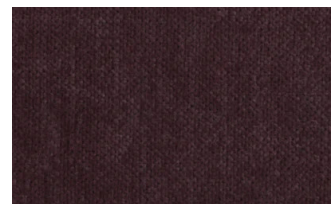
P321-6200-039



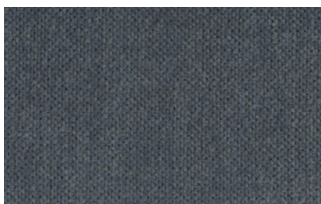
P321-6200-901



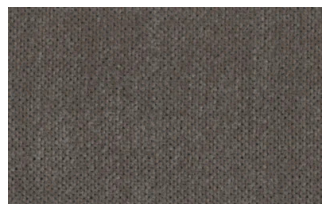
P321-6300-419



P321-6300-503



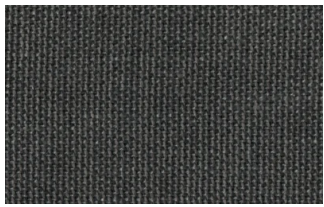
P321-6300-988



P321-6300-996

EXTRA

Anice



1



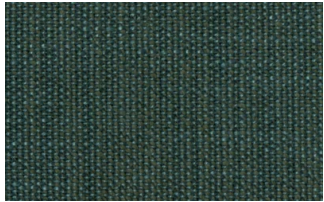
2



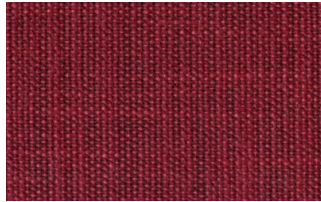
3



4



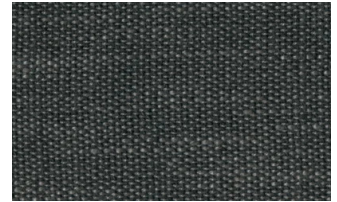
5



6



7

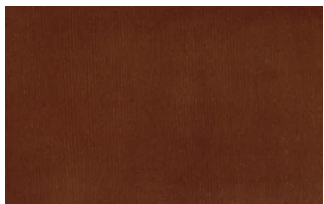


8

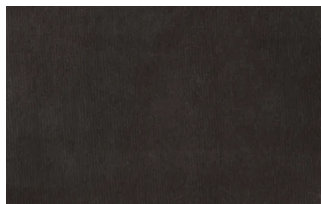


9

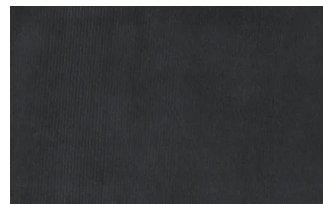
Lovely



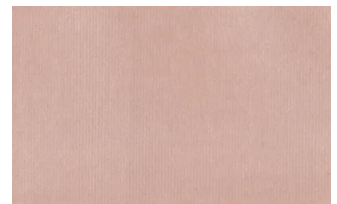
6



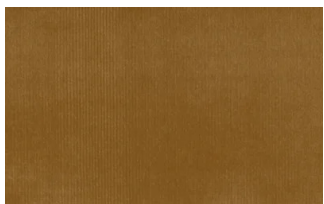
10



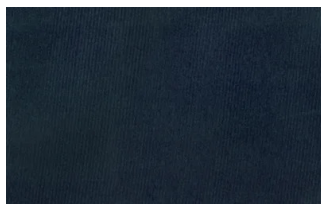
19



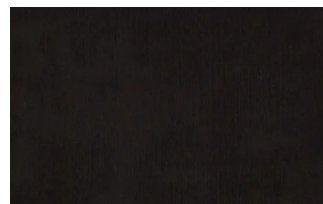
22



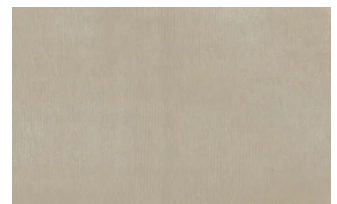
27



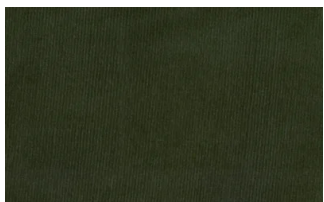
31



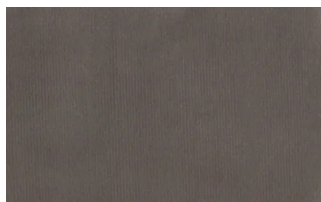
36



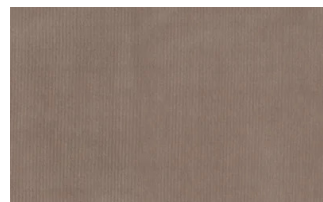
102



113



200

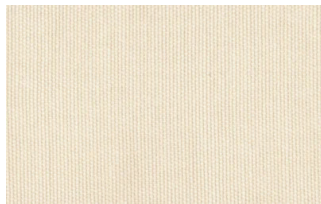


202

Cosme



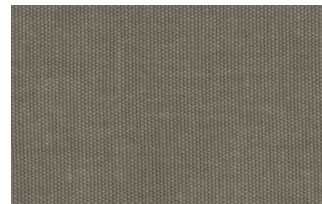
e200



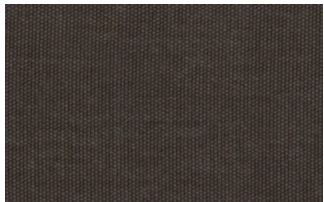
e202



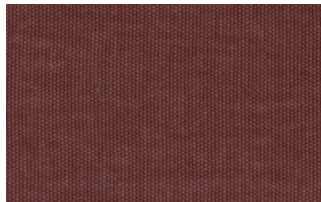
e205



e206



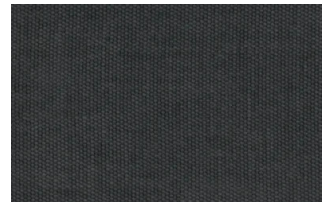
e209



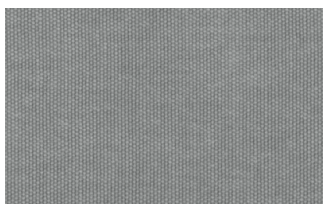
e220



e232



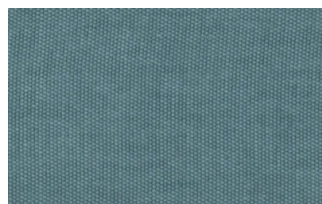
e234



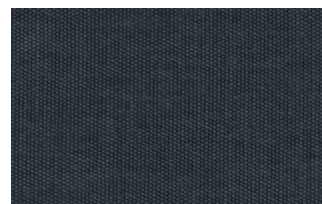
e236



e240

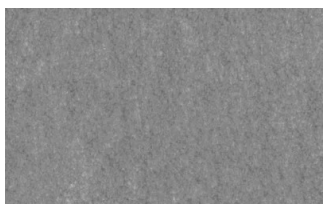


e241

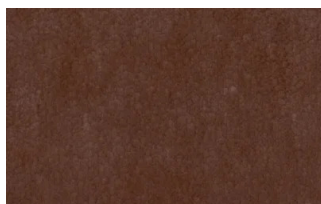


e244

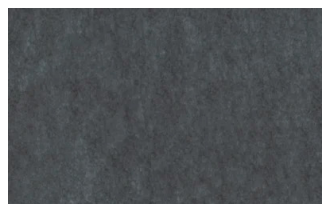
Soda



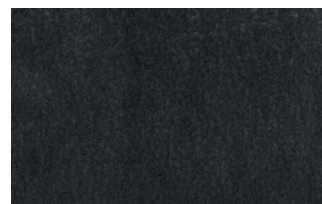
29



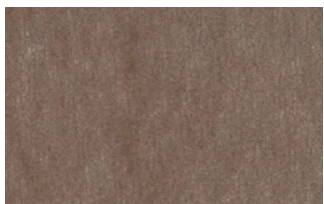
30



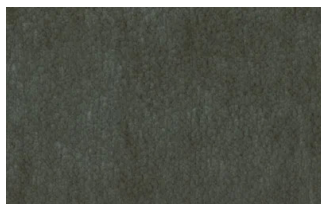
39



41



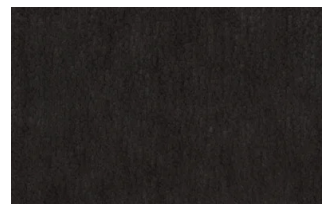
56



62



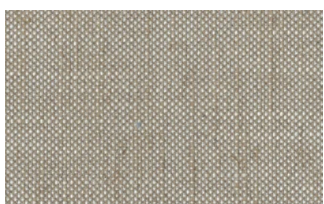
74



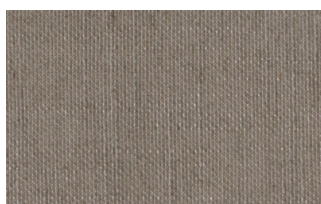
104

LIGHT

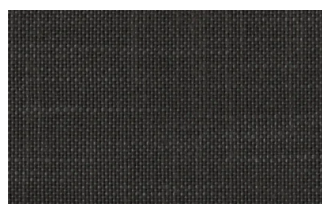
Lima



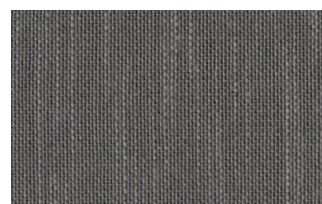
2



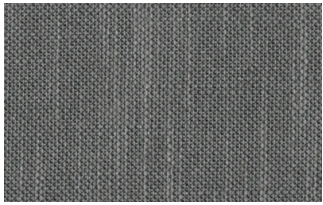
5



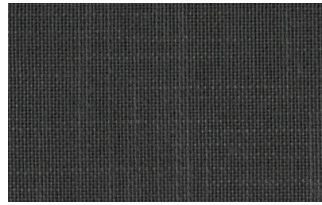
10



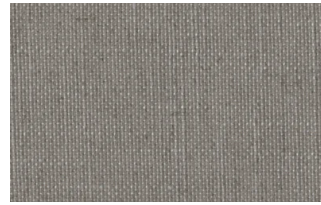
12



14



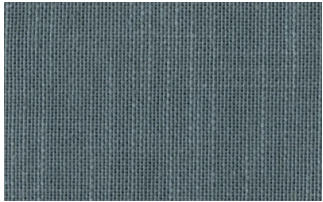
16



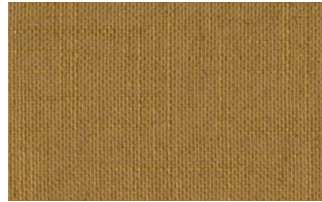
23



29



31



43

Mimi



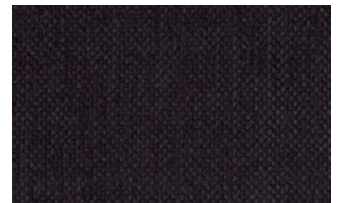
A3004



A3005



A3006



A3014

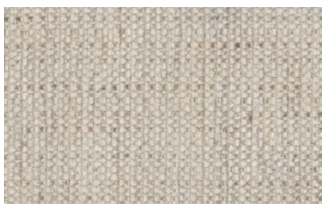


A3018

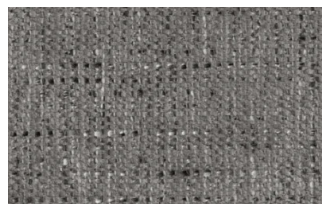


A3023

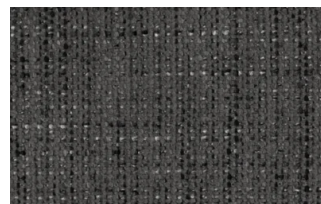
Memphis



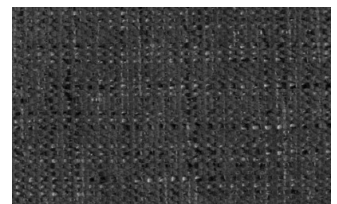
1



6



10



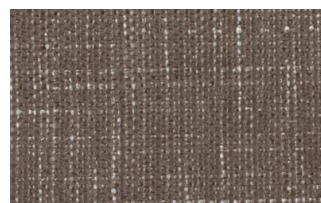
11



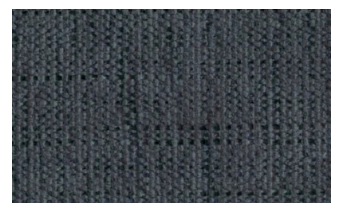
13



14



15



16

SUPER

Hylemt



25



102



109



117



121



204



207

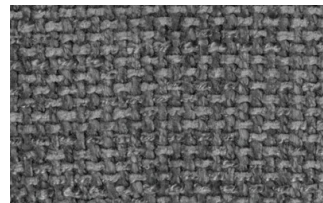
Axum



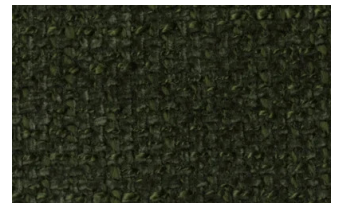
3



11



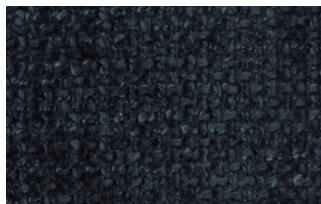
12



18



21



23



29

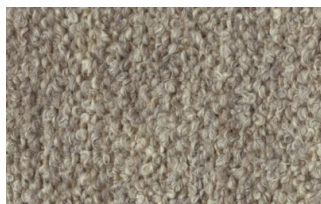


30

Barnum Unito



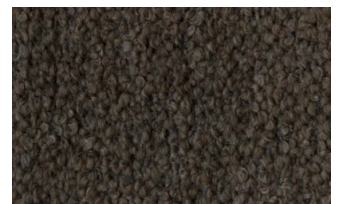
1 bianco



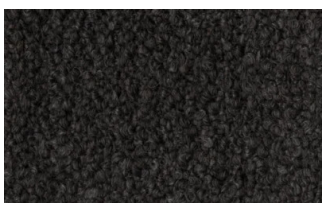
2 corda



9 bosco



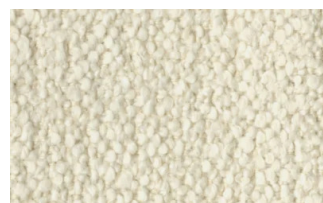
10 piombo



13 lavagna



23 bruciato



24 lana

Leathers

K LEATHERS

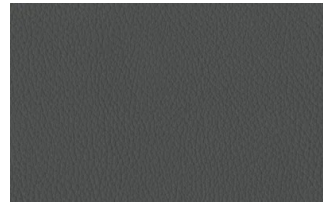
Leather



200



202



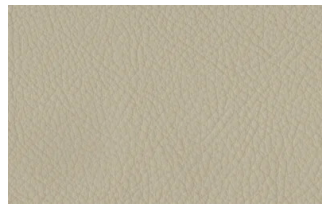
204



206



207



208



211



214



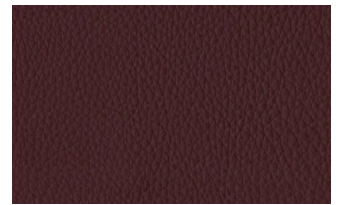
217



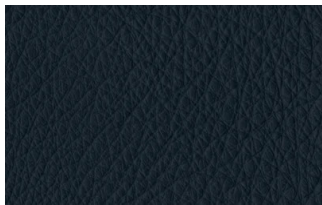
224



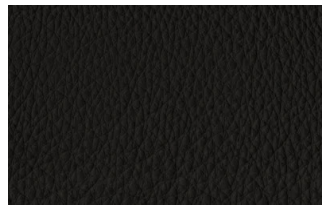
228



234



274



298



301

W LEATHERS

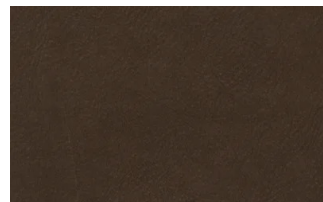
Nabuk



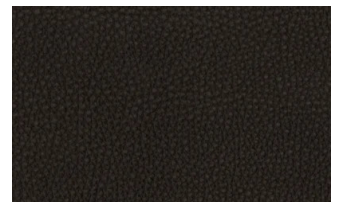
Creta



Camel



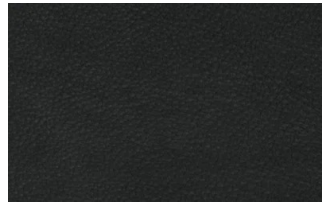
marrone



Testa di moro



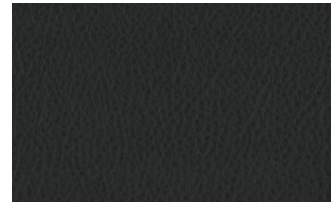
Seppia



Black



Hard leather



Grigio

Ecoleathers

EXTRA ECO-LEATHERS

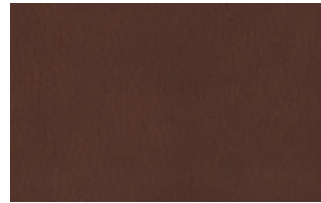
Vintage eco-leather



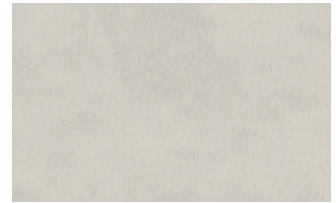
2



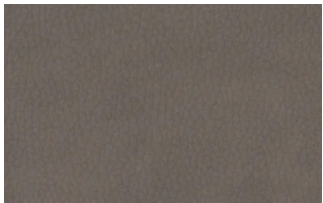
3



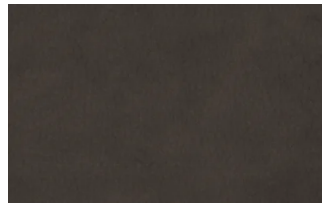
4



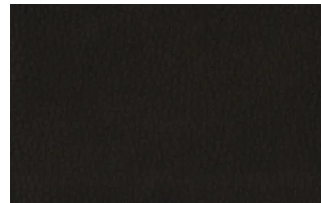
6



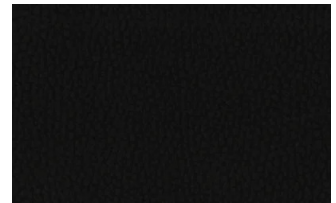
7



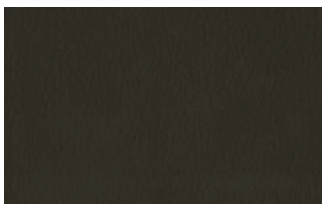
8



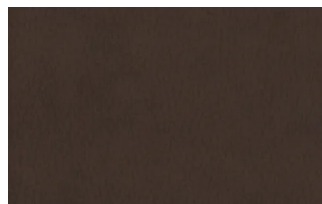
9



14



19



22

Gros-grain fabric

GROS-GRAIN FABRIC

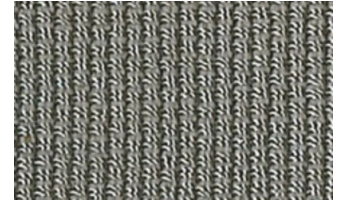
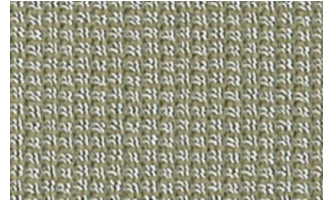
Gros-grain Edging



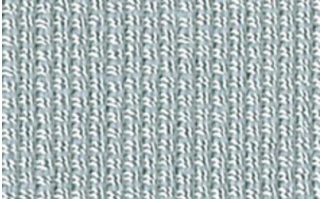
Bianco



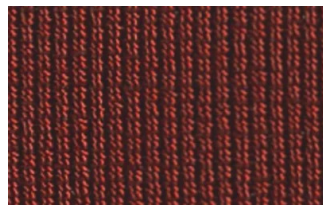
Beige



Tortora



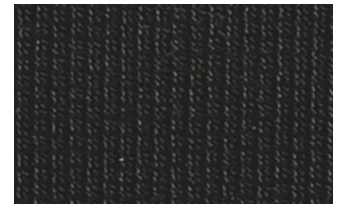
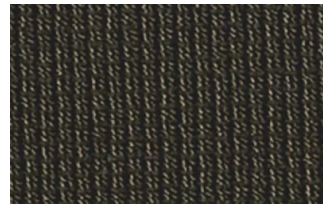
Grigio



Corda



marrone



Black