

Chairs

# Gulp

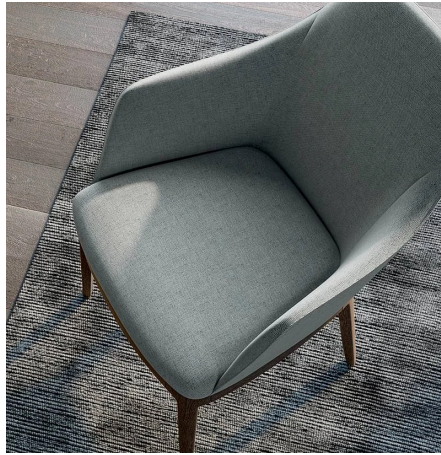


Gulp is a comfortable chair that takes its space. In the armchair version even more so. The finely crafted wooden base is well placed on the ground. The seat is sloped, to be upholstered in fabric, leather or faux leather.



## GULP ARMCHAIR

The elegant and classic armchair version emphasizes the comfort of the chair model. The wraparound back continues into the sides in two high armrests that welcome with confidence and an essential, soft and light line.



## GULP CHAIR

The Gulp upholstered chair is perfect if you have smaller spaces than you need for the armchair and if you don't want to give up comfort.



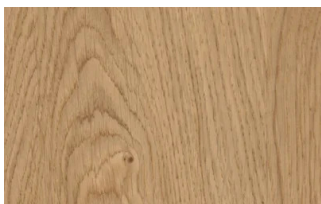
## FINISHES

Remember that for both Gulp chair and armchair you can customize the back with a different material or finish from those used on the front. Find out about all the finishes now.

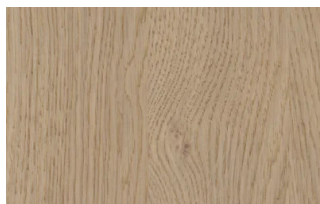
### Woods

#### WOODS 1

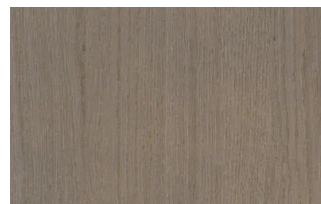
##### Woods 1



Natural oak



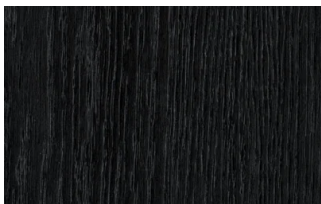
Oak visone



Oak cenere



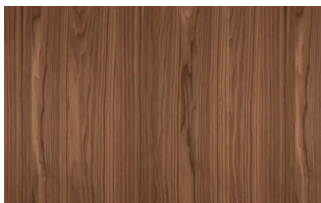
Oak castoro



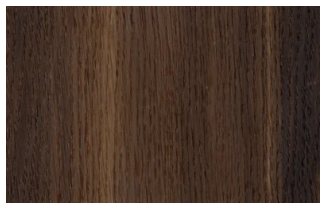
Oak carbone

#### WOODS 2

##### Woods 2



Canaletto walnut



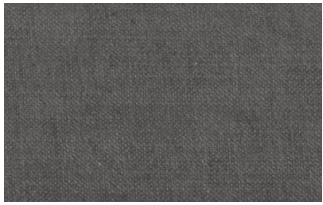
Heat-treated oak

### Fabrics

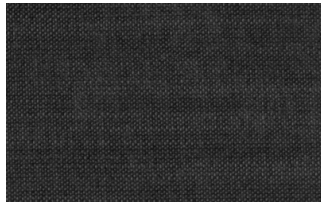
#### BASIC

X370

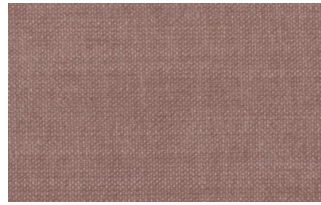




3



4



9



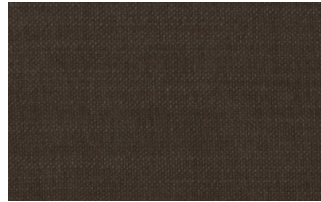
10



23

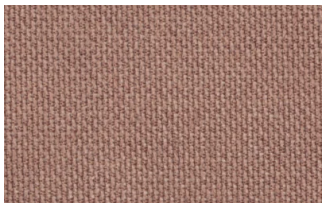


29

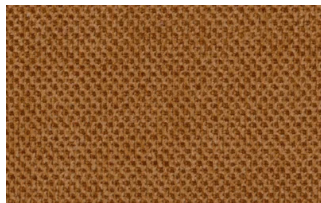


32

## Relax



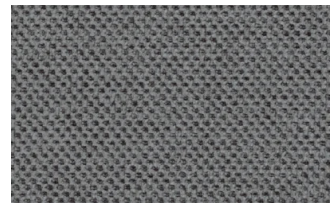
5



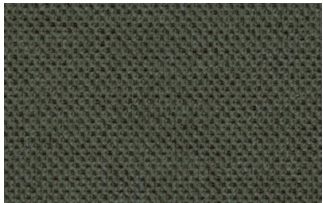
20



25



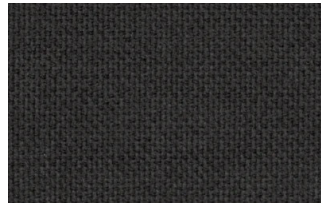
53



62



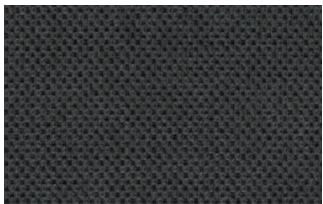
66



74



81

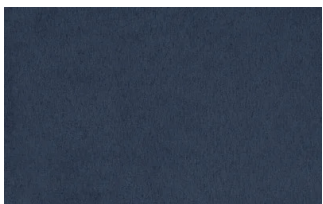


96

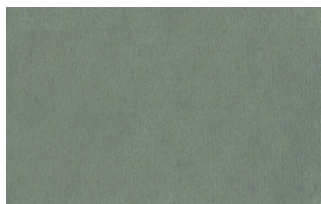


103

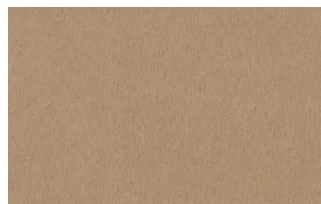
## Divina



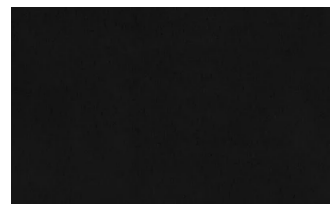
15



19



21



22





34



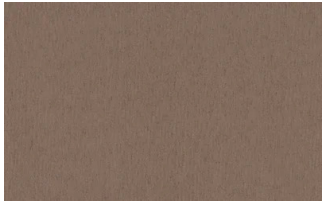
46



49



50



76



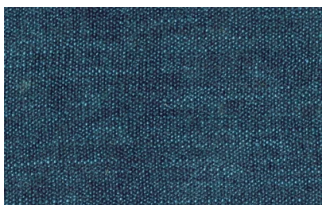
88



561

## START

### Scoop



6



7



9



25



31



59



104

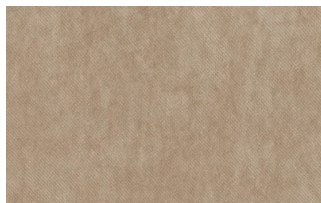


561

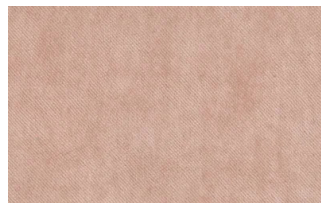
### Stropiccio



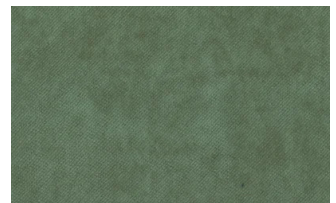
4



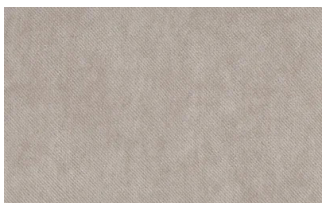
6



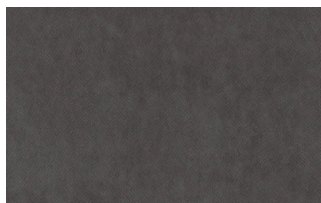
8



17



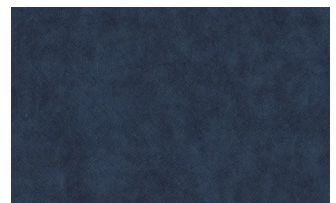
19



20



22



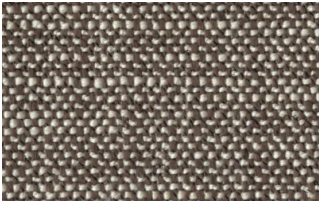
23



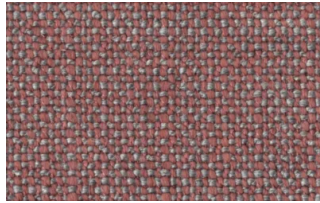


30

## Nodone



1302



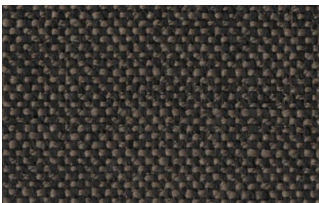
1307



1308



1309



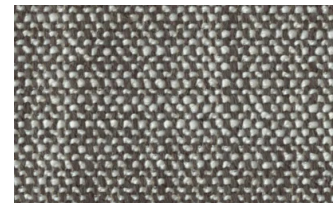
1310



1311

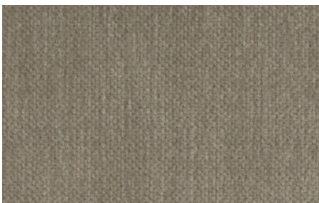


1313

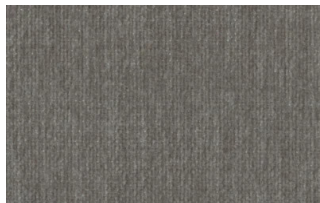


1314

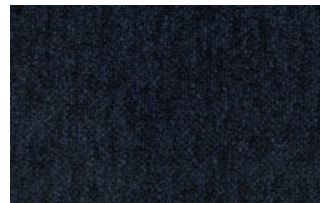
## R Flair



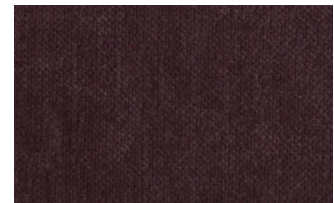
P321-6200-039



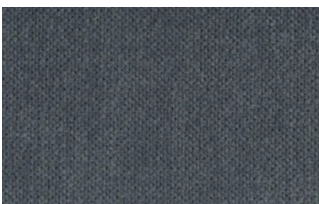
P321-6200-901



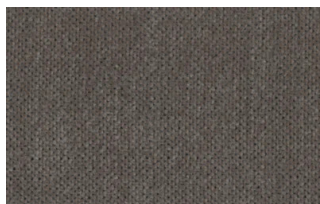
P321-6300-419



P321-6300-503



P321-6300-988



P321-6300-996

## EXTRA

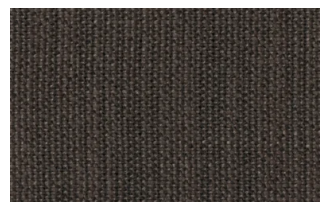
### Anice



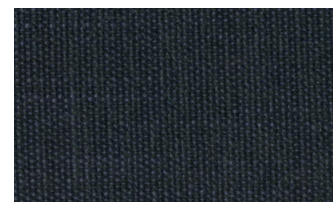
1



2

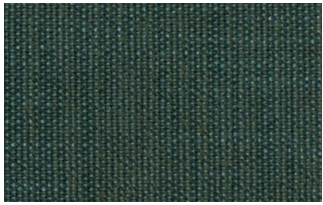


3

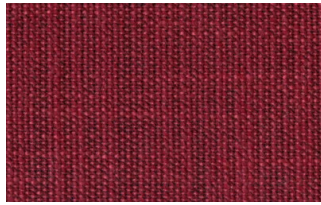


4





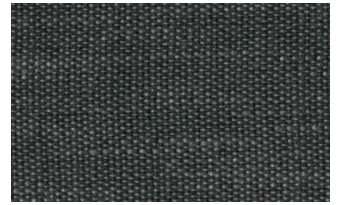
5



6



7

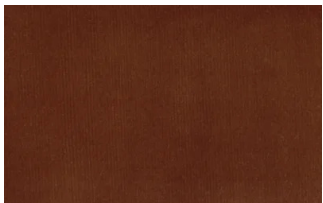


8

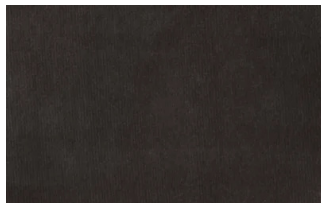


9

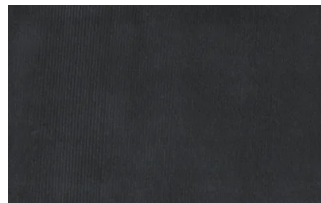
## Lovely



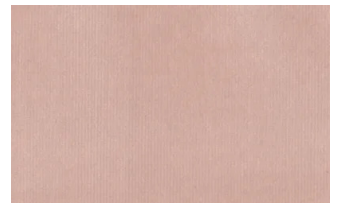
6



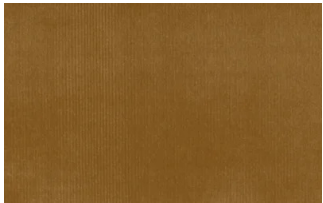
10



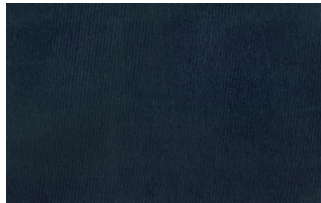
19



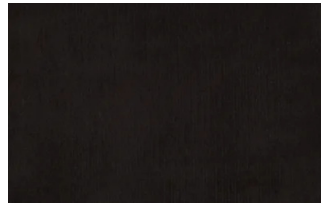
22



27



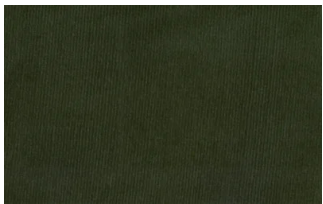
31



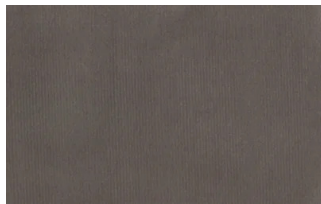
36



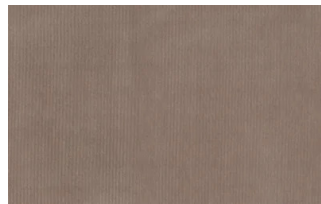
102



113



200

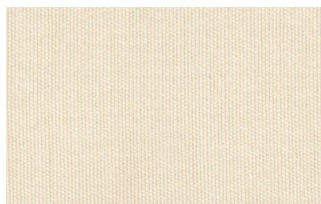


202

## Cosme



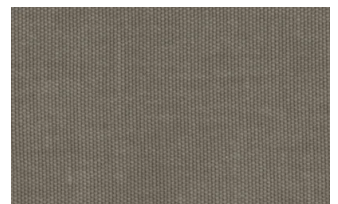
e200



e202



e205



e206

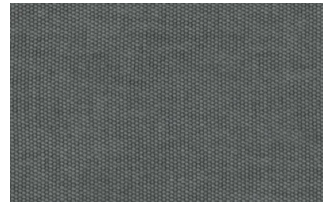




e209



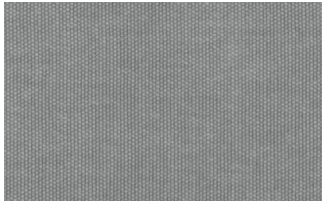
e220



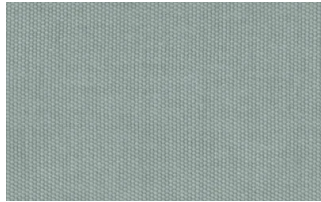
e232



e234



e236



e240

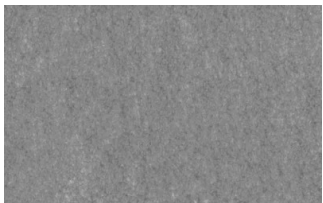


e241

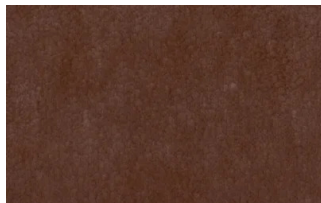


e244

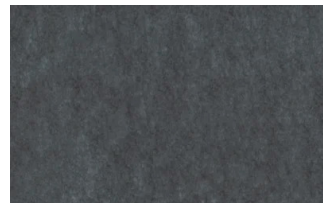
## Soda



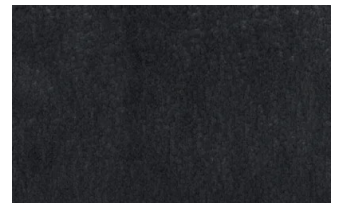
29



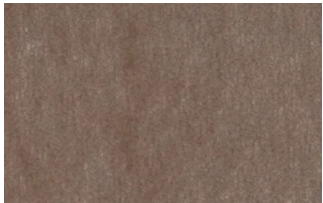
30



39



41



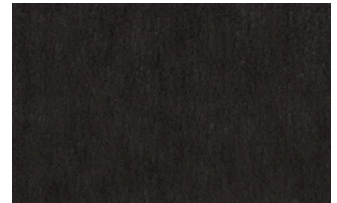
56



62



74



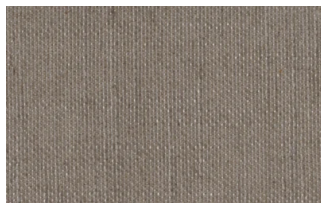
104

## LIGHT

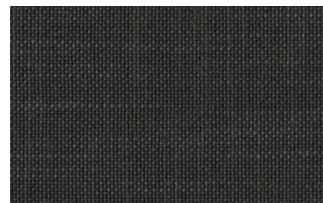
### Lima



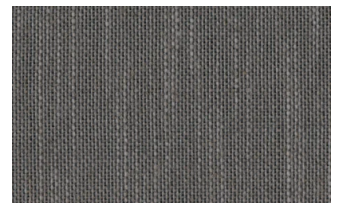
2



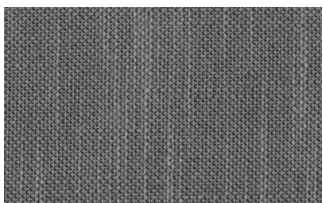
5



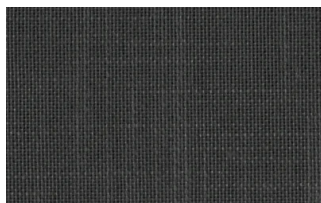
10



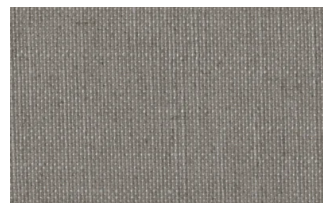
12



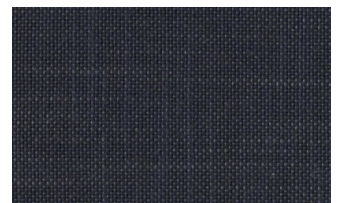
14



16

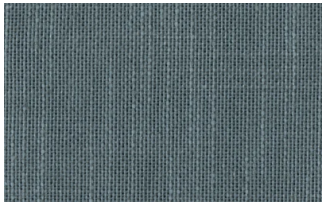


23

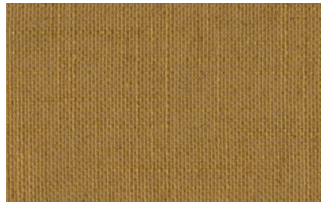


29





31

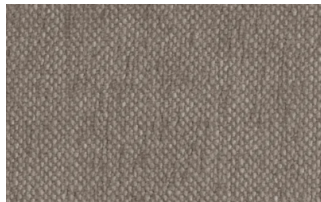


43

## Mimi



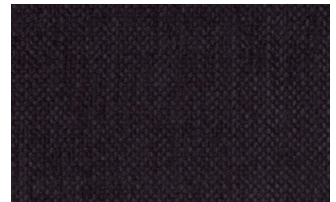
A3004



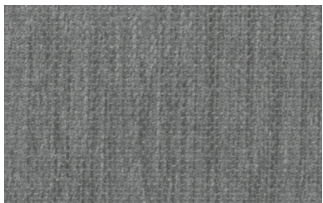
A3005



A3006



A3014



A3018

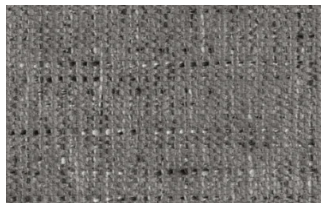


A3023

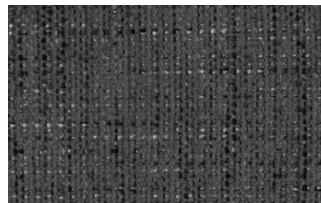
## Memphis



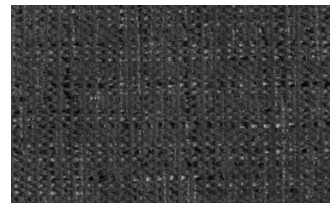
1



6



10



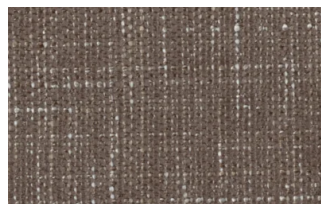
11



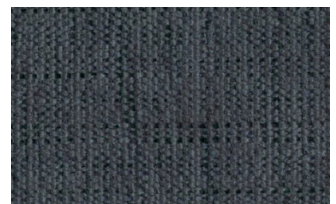
13



14



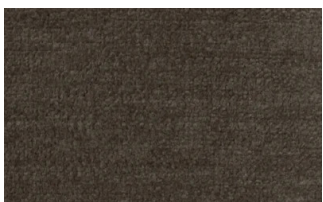
15



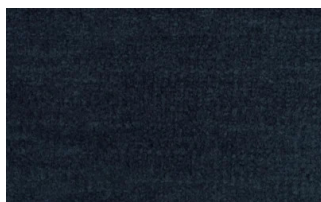
16

## SUPER

### Hylemt



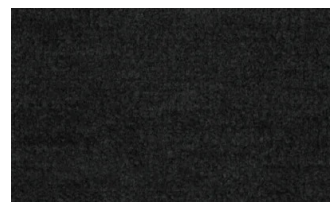
25



102



109



117





121



204



207

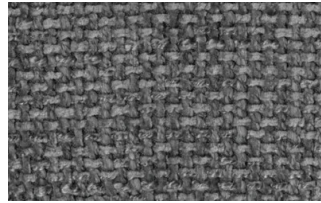
## Axum



3



11



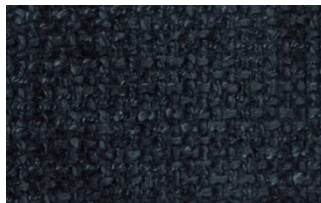
12



18



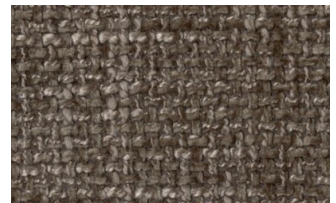
21



23



29



30

## Barnum Unito



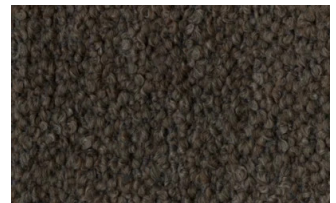
1 bianco



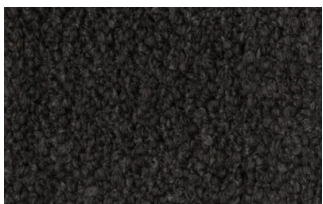
2 corda



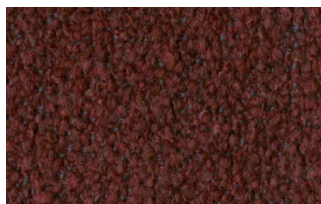
9 bosco



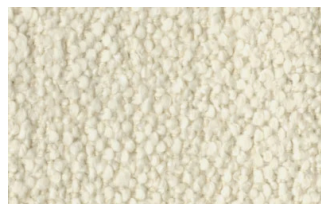
10 piombo



13 lavagna



23 bruciato



24 lana

## Leathers

### K LEATHERS

Leather





200



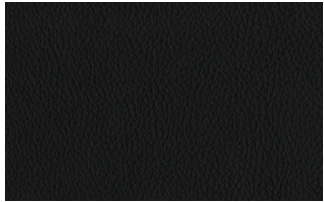
202



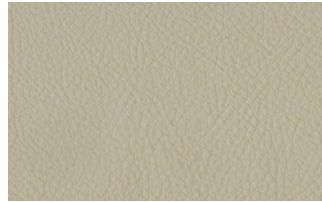
204



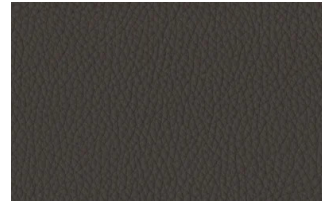
206



207



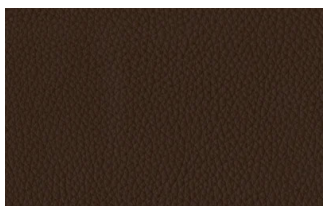
208



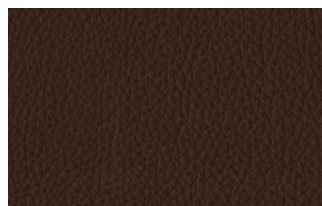
211



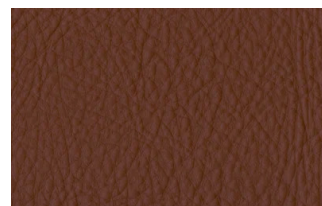
214



217



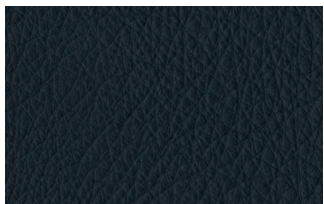
224



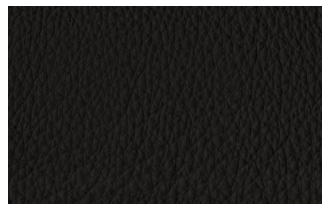
228



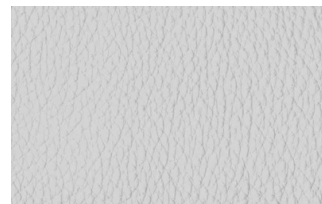
234



274



298



301

## W LEATHERS

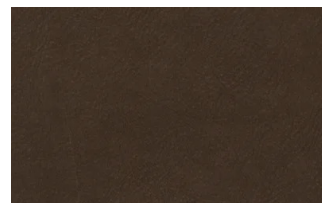
### Nabuk



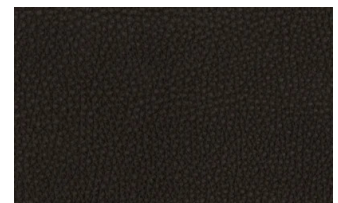
Creta



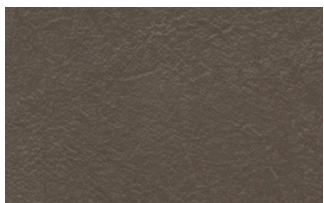
Camel



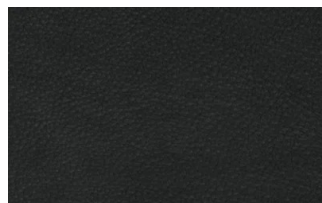
marrone



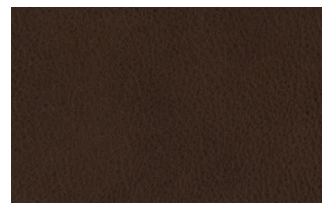
Testa di moro



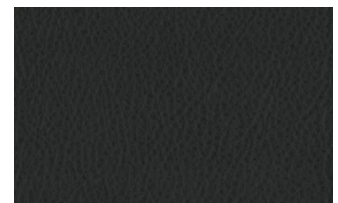
Seppia



Black



Hard leather

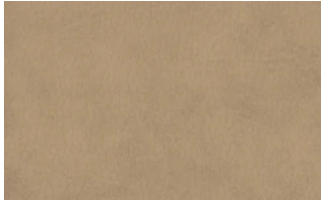


Grigio

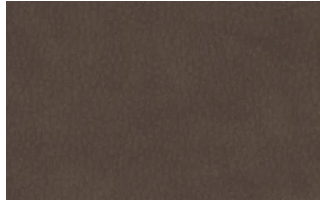
Ecoleathers

## EXTRA ECO-LEATHERS

Vintage eco-leather



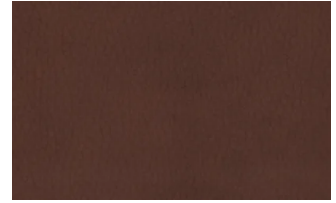
2



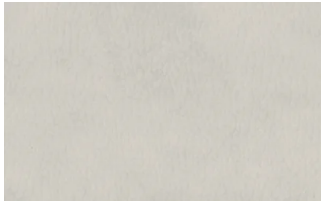
3



3 intreccio



4



6



7



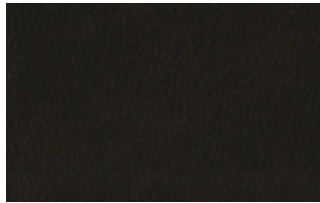
7 intreccio



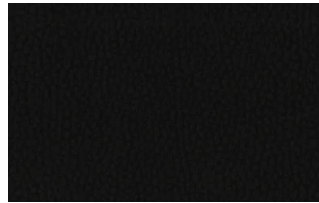
8



8 intreccio



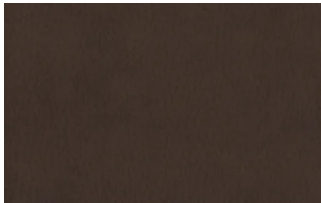
9



14



19



22