

Sofas

# Swing



Modern, linear and comfortable modular sofa system. The rigorous shape of the shell is softened by the goose down mats used as seat and backrest and those resting on the armrests.

## SWING: SOFA WITH GOOSE-DOWN CUSHIONS

The large goose down cushions, almost like mattresses lying on the important base and supported by polished cast metal feet, give Swing a refined and elegant appearance. They are properly quilted, to maintain shape, and then rested on the shell, which is constructed of solid fir and plywood structural parts, and then upholstered.



## SWING: SECTIONAL SOFA

The extensive modularity of the Swing sofa system consists of a two-seater, two-and-a-half-seater or three-seater sofa, side modules with the same division, corner element, island or sundial, matching square ottoman and decorative cushions.





# FINISHES

Discover now the finishes available to furnish your home with the Swing sofa in fabric, leather or faux leather.

## Fabrics

### BASIC

#### X370



3



4



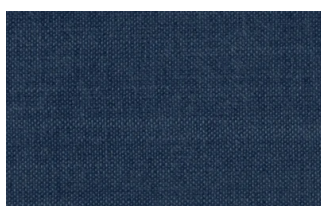
9



10



23



29

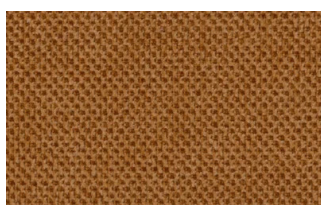


32

### Relax



5



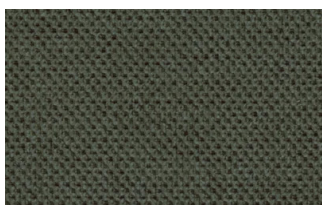
20



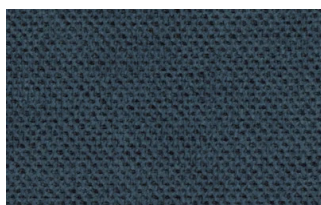
25



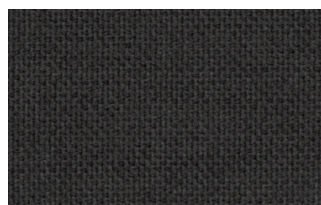
53



62



66



74



81



96



103





15



19



21



22



34



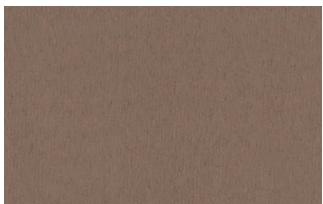
46



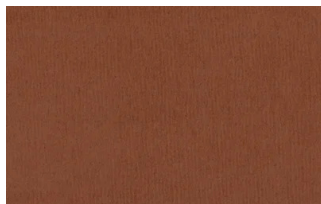
49



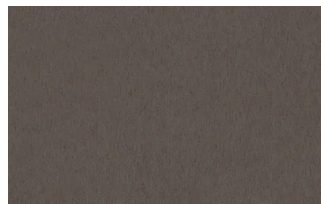
50



76



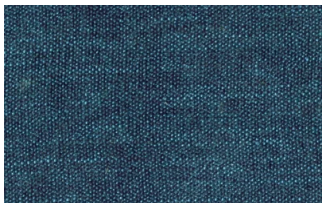
88



561

## START

### Scoop



6



7



9



25



31



59



104

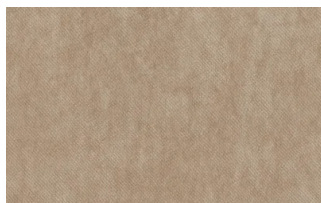


561

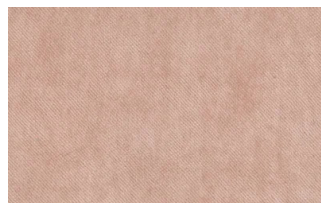
### Stropiccio



4



6

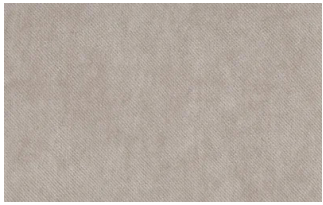


8



17





19



20



22

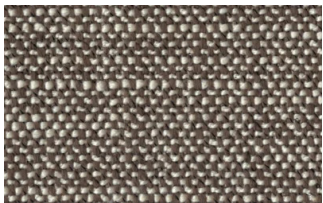


23

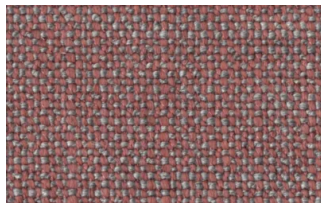


30

## Nodone



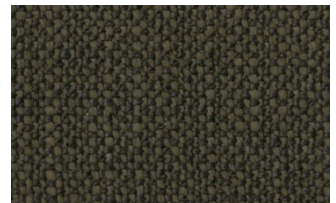
1302



1307



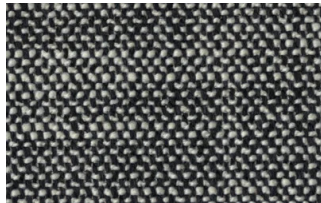
1308



1309



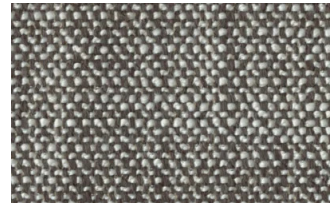
1310



1311

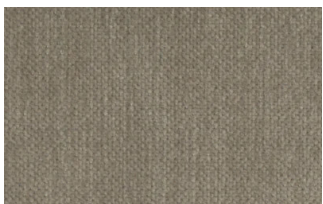


1313

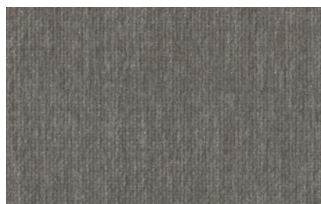


1314

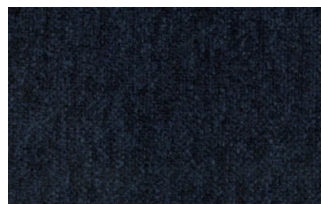
## R Flair



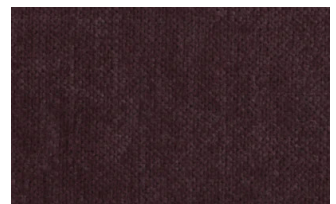
P321-6200-039



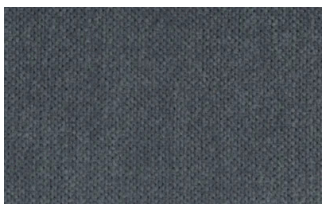
P321-6200-901



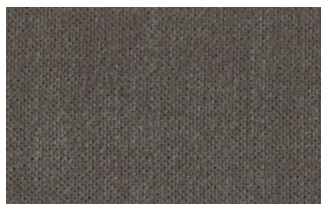
P321-6300-419



P321-6300-503



P321-6300-988



P321-6300-996

## EXTRA

### Anice



1



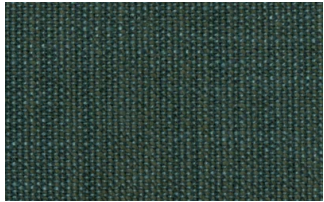
2



3



4



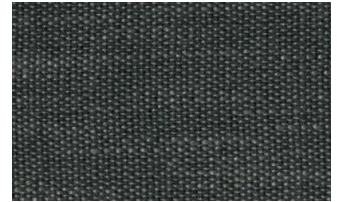
5



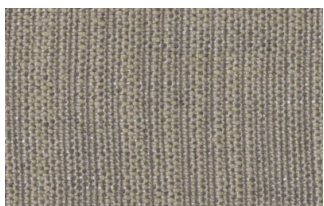
6



7

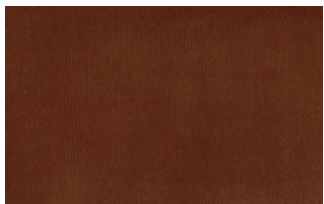


8

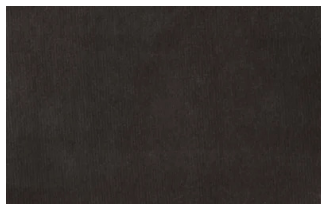


9

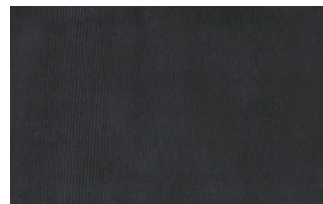
## Lovely



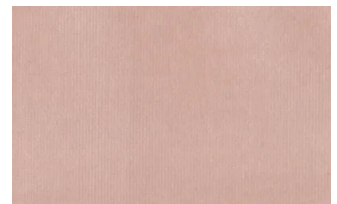
6



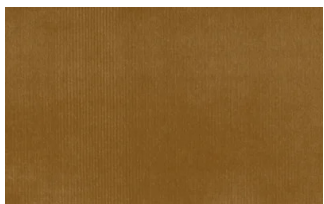
10



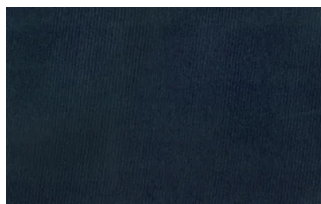
19



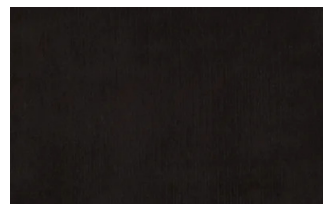
22



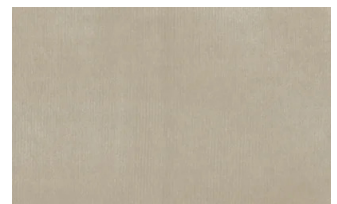
27



31



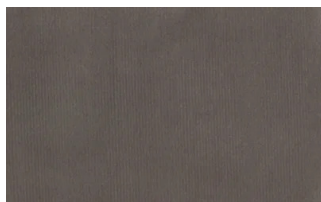
36



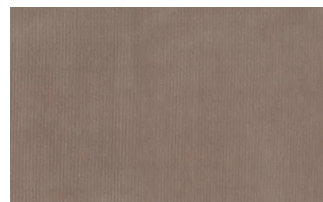
102



113



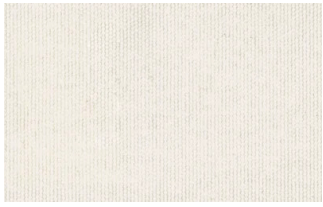
200



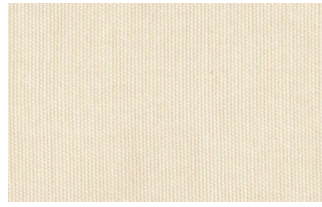
202

## Cosme

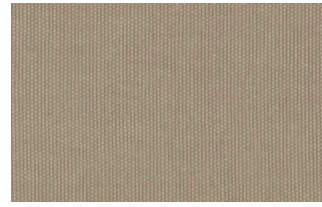




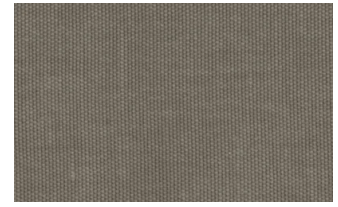
e200



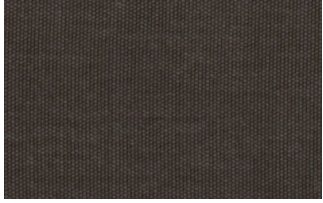
e202



e205



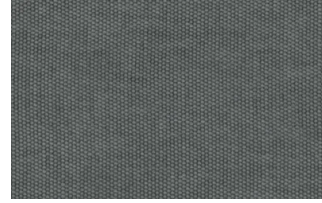
e206



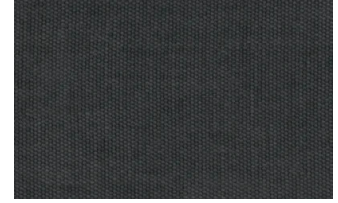
e209



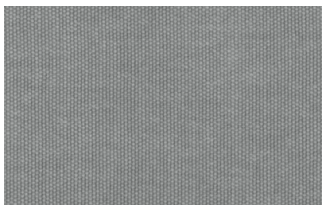
e220



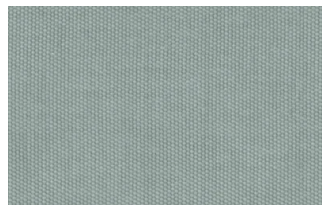
e232



e234



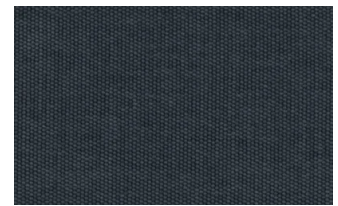
e236



e240

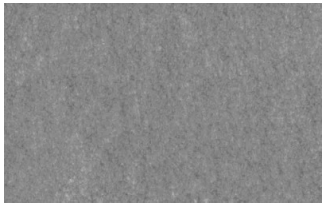


e241

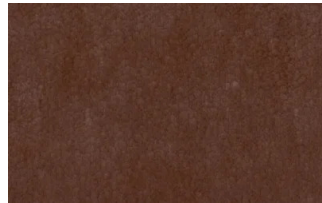


e244

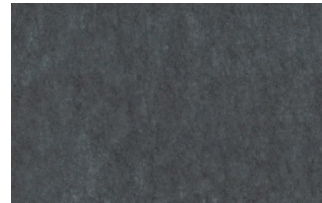
## Soda



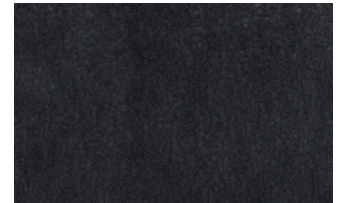
29



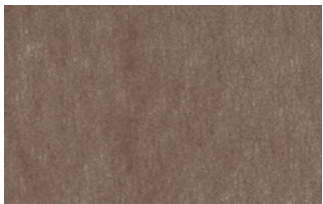
30



39



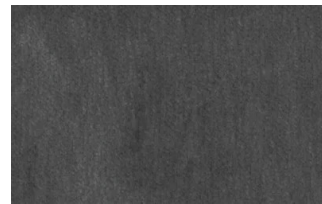
41



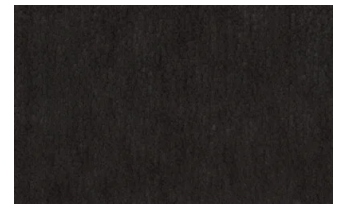
56



62



74



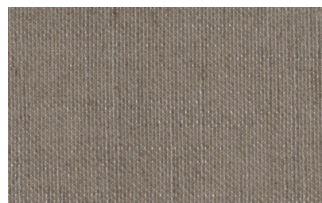
104

## LIGHT

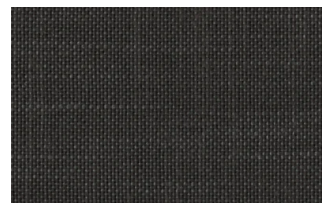
### Lima



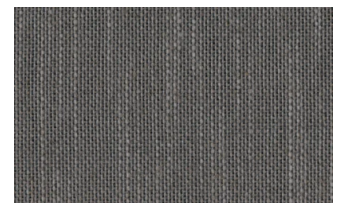
2



5

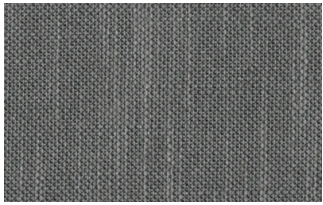


10

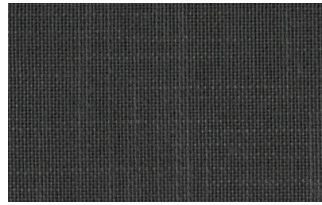


12

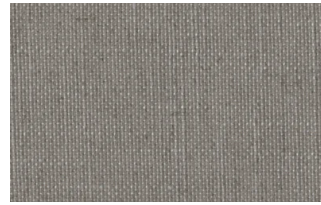




14



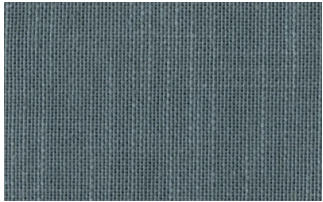
16



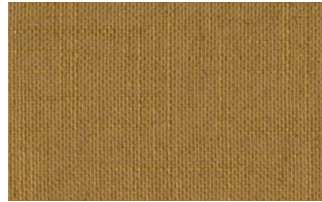
23



29



31



43

## Mimi



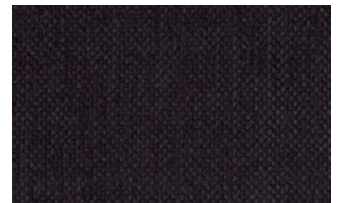
A3004



A3005



A3006



A3014

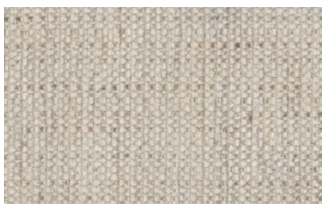


A3018

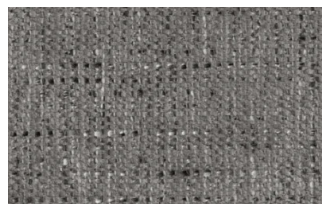


A3023

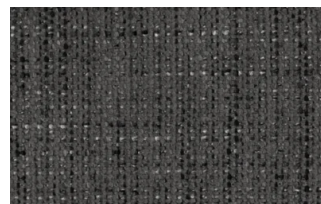
## Memphis



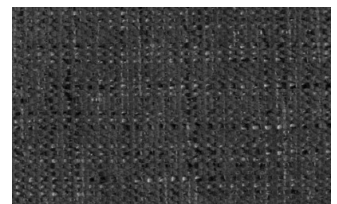
1



6



10



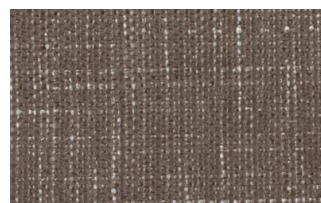
11



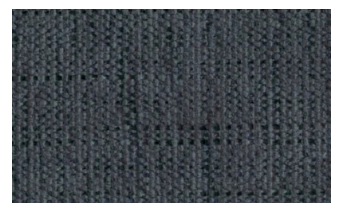
13



14



15



16

## SUPER

Hylemt





25



102



109



117



121



204



207

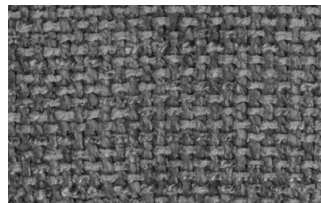
## Axum



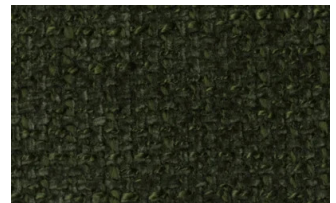
3



11



12



18



21



23



29

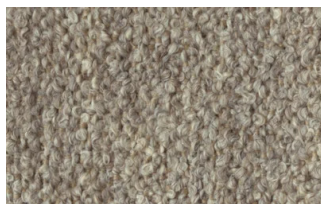


30

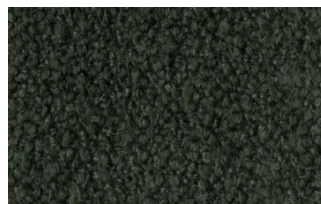
## Barnum Unito



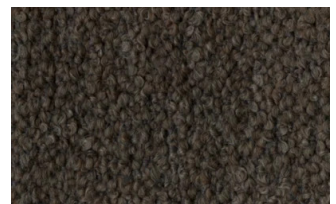
1 bianco



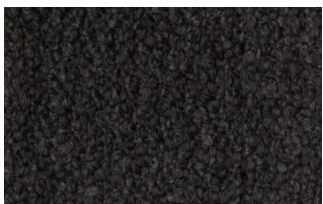
2 corda



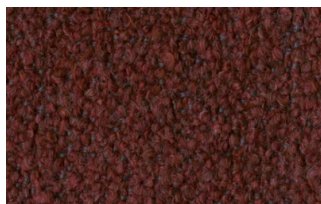
9 bosco



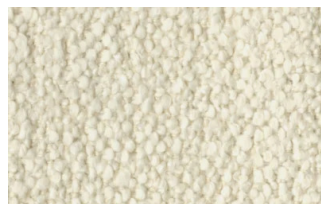
10 piombo



13 lavagna



23 bruciato



24 lana

# Leathers

## K LEATHERS

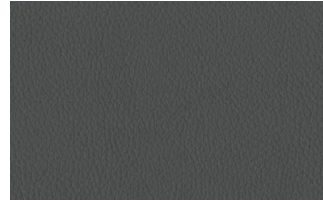
### Leather



200



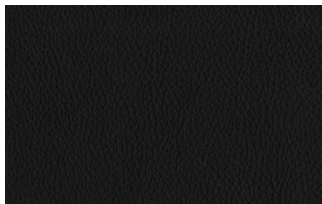
202



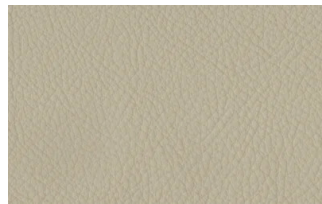
204



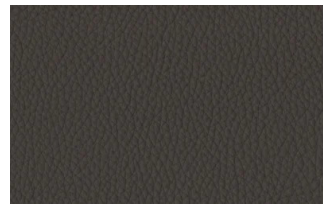
206



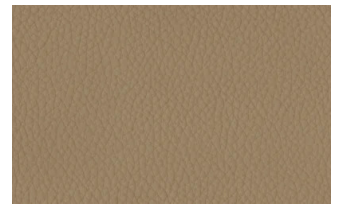
207



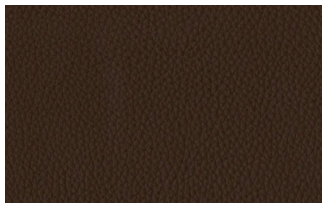
208



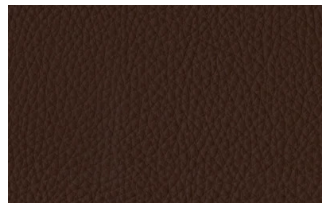
211



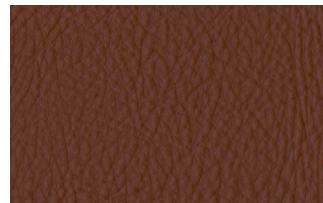
214



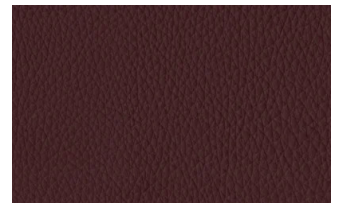
217



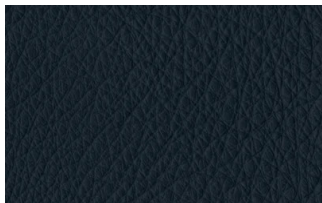
224



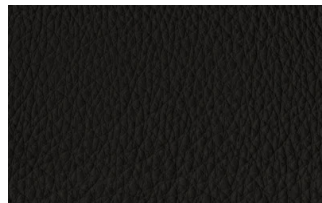
228



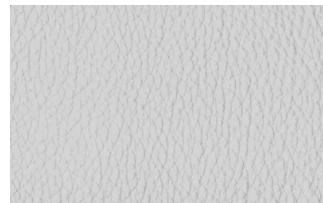
234



274



298



301

## W LEATHERS

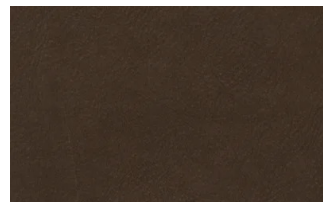
### Nabuk



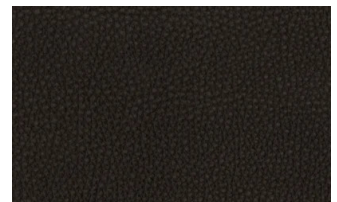
Creta



Camel



marrone

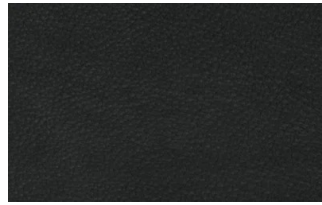


Testa di moro





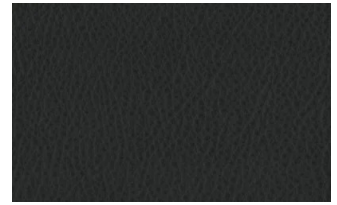
Seppia



Black



Hard leather



Grigio

## Ecoleathers

### EXTRA ECO-LEATHERS

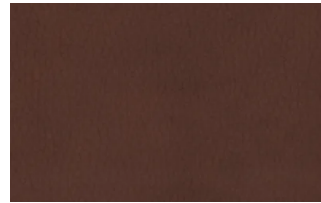
#### Vintage eco-leather



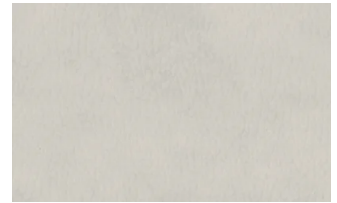
2



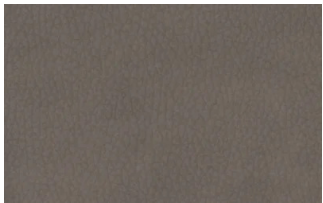
3



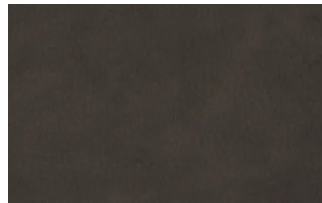
4



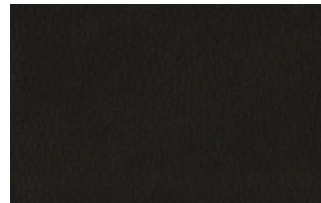
6



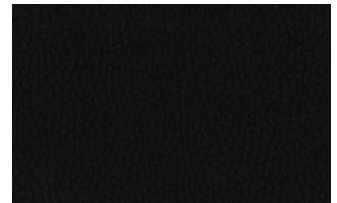
7



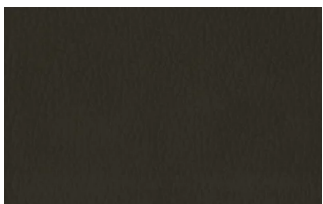
8



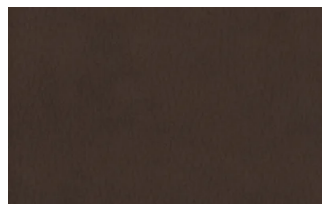
9



14



19



22