

Tables

Radar



Table with metal frame, central tie rods, thin top in different sizes. Radar is the harmony of tension. It intercepts those who seek an agreement between balance and movement.



TABLE WITH TIE RODS

Radar is a table with central tie rods attached to the metal base to support its structure, a nod to the lattice structures of engineering designs, grafted onto an homage to the famous medieval "fratino table." Used in convents, it had a thick, narrow and long top supported by legs placed at the ends, connected by a longitudinal crossbar.



THIN TOP

Radar's slim top is either fixed and rectangular, so as to create a table with an industrial flavor, or with a fixed top that is more oval to aim for a more traditional and elegant style ensemble. In the rectangular veneer version, the perimeter edge can be chosen straight or tilted at 30°.



BALANCE OF STYLES

The rigorousness of the Radar table goes well with other regular, linear forms, such as the Glass Up storage units for the living room or the Slim Up sideboard and its distinctive ornamental play of horizontal and vertical grooves.



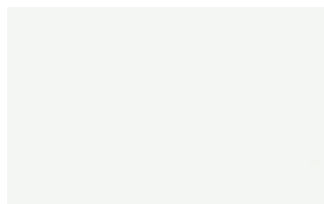
FINISHES

The Radar table offers a wide variety of finishes to choose from to customize it to your exact needs. Check them out now.

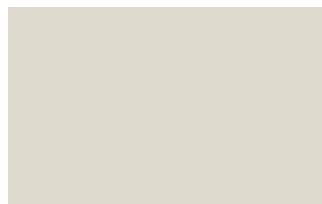
Lacquers

MATT LACQUERS

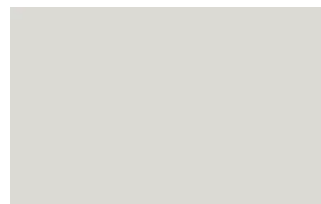
Matt lacquers



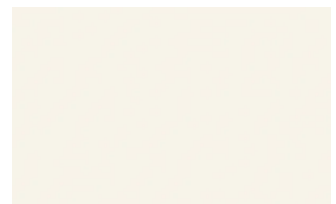
Bianco



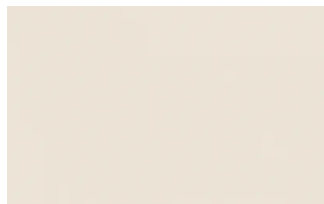
Ghiaccio



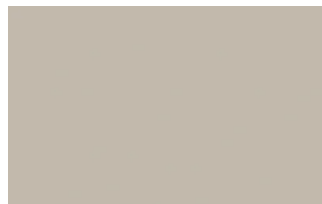
Sabbia



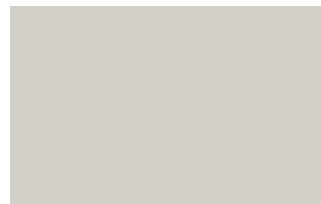
Panna



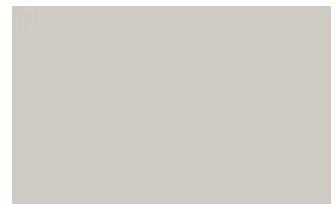
Crema



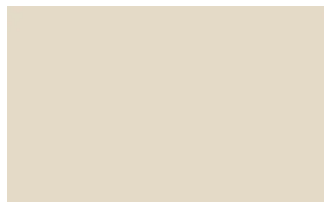
Grigio seta



Grigio perla



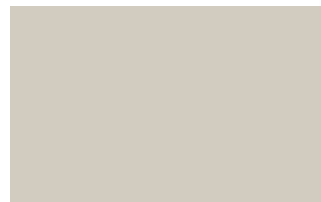
Light grey



Fior di loto



Giallo senape



Tortora



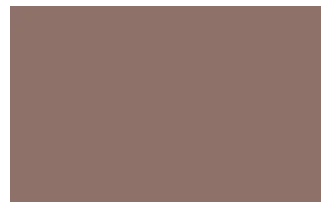
Canapa



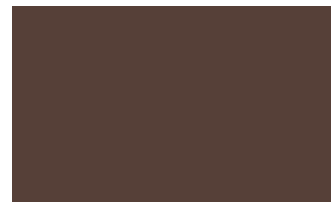
Corda



Dark grey



Terracotta



Moka



Rosso bordeaux



Rosso



Rosa cipria



Bruciato



Carta da zucchero



Grigio blu



Verde pallido



Verde malva



Grigio aston



Celeste



Turchese



Grigio Garda



Blu cobalto



Oceano



Grigio antracite

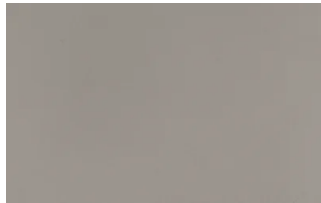


Nero

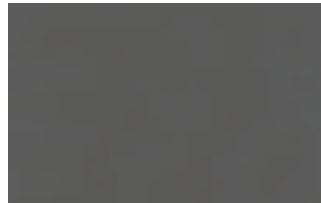
Metallic matt lacquers



Titanio



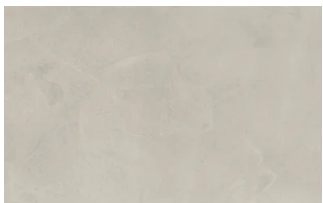
Nichel



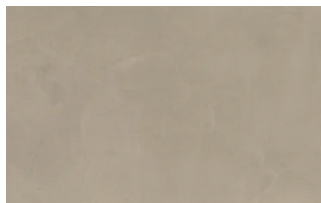
Piombo

UP SURFACES

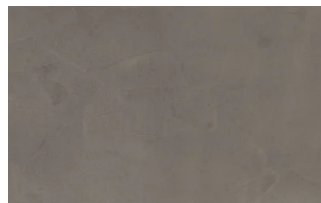
Concrete effect lacquers



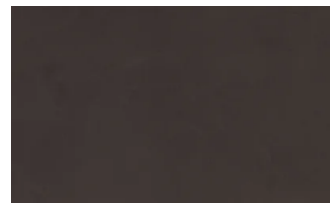
Perla



Argilla

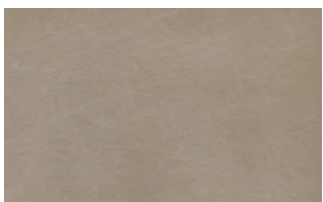


Grafite

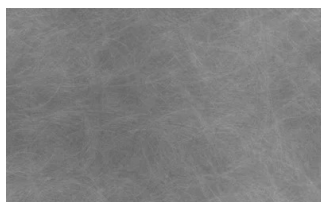


Lava

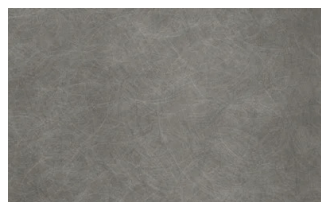
Metal effect lacquers



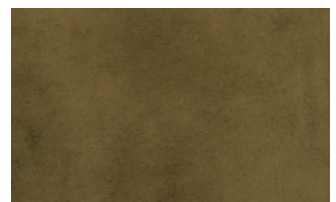
Nichel



Piombo



Titanio



Ossido ottone



Ossido bronzo

Woods

WOODS 1

Woods 1



Natural oak



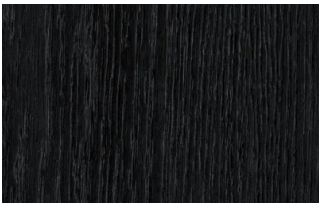
Oak visone



Oak cenere



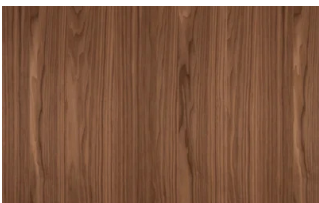
Oak castoro



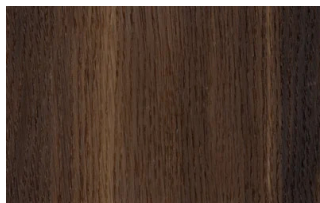
Oak carbone

WOODS 2

Woods 2



Canaletto walnut



Heat-treated oak

Stoneware

STONEWARE

Matt stoneware



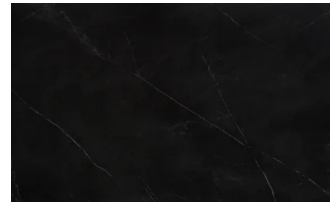
Azalai nero



Jasper moka



Storm grigio



Storm nero

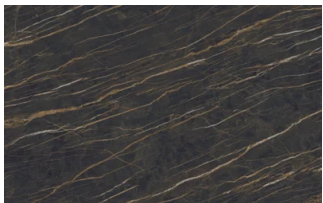


Senda grigio

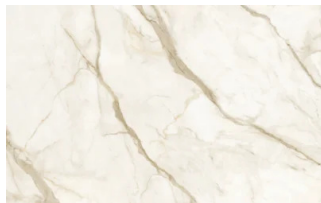


Pacific bianco

Glossy stoneware



Noir desir



Calacatta oro



Breche capraia

Textured finishes

TEXTURED FINISHES

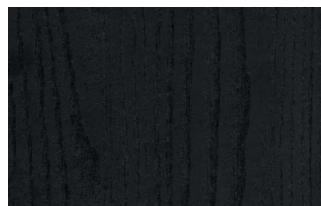
Textured finishes



Heat-treated oak



Avana



Oak carbone



pietra piacentina

Metals

METALS 1

Metals 1



Black



Titanium



Brown

METALS 2

Metals 2



Antiqued brass