

Shoe cabinets

XL



XL is a shoe cabinet for large, as well as normal, shoes, that is highly functional thanks to a design based on two main concepts: simplicity and efficiency. Simply remove an internal shelf to accommodate all types of shoes, without affecting its style in any way. Characterised by a linear and refined design, it has a handle with alternating positioning in all units to become a sophisticated decoration.

SHOE CABINET WITH BUILT-IN HANDLE

The XL shoe cabinet has a linear metal handle, embedded in a lateral position in relation to the front of the flap doors. It defines the design with character and can be lacquered in an infinite number of finishes selected by Birex. The shoe cabinet can be made up of a structure with a single door or become a column shoe cabinet with two, three or four doors and accommodate one to three rows of shoes inside.



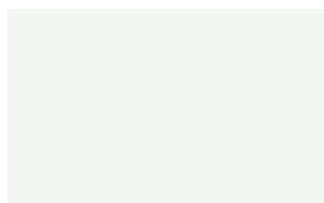
FINISHES

Matt, glossy, mica, resin or metal effect lacquers. Textured finishes with wood grain, stone and more. Discover how to customise XL.

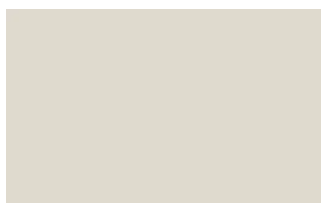
Lacquers

MATT LACQUERS

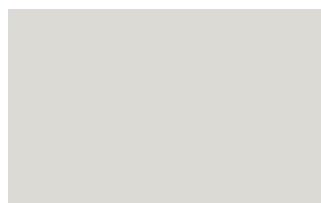
Matt lacquers



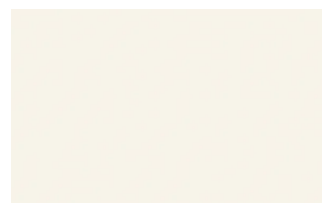
Bianco



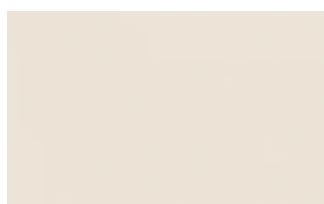
Ghiaccio



Sabbia



Panna



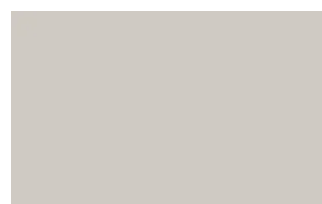
Crema



Grigio seta



Grigio perla



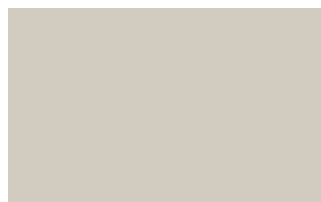
Light grey



Fior di loto



Giallo senape



Tortora



Canapa



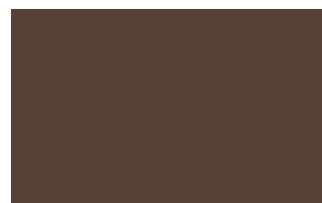
Corda



Dark grey



Terracotta



Moka



Rosso bordeaux



Rosso



Rosa cipria



Bruciato



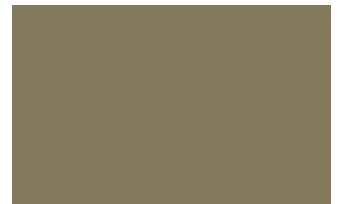
Carta da zucchero



Grigio blu



Verde pallido



Verde malva



Grigio aston



Celeste



Turchese



Grigio Garda



Blu cobalto



Oceano



Grigio antracite

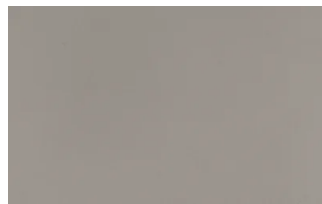


Nero

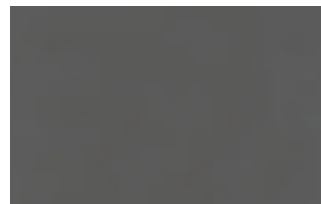
Metallic matt lacquers



Titanio



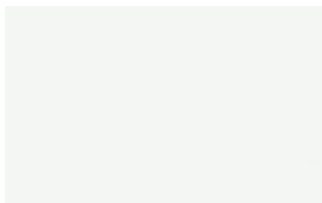
Nichel



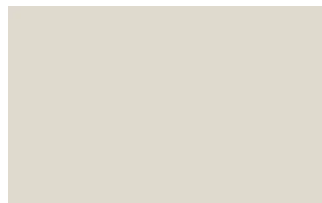
Piombo

GLOSSY LACQUERS

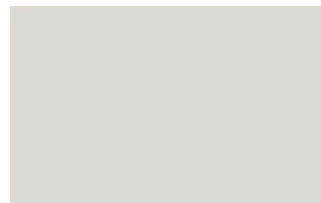
Glossy lacquers



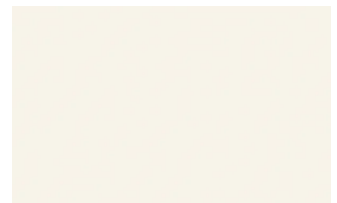
Bianco



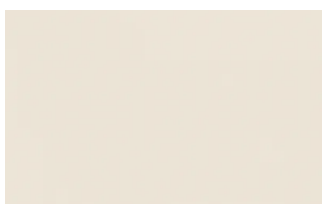
Ghiaccio



Sabbia



Panna



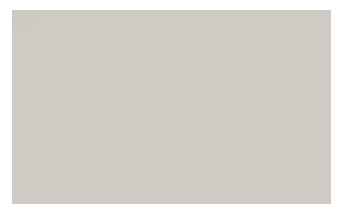
Crema



Grigio seta



Grigio perla



Light grey



Fior di loto



Giallo senape



Tortora



Canapa



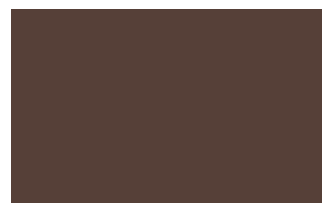
Corda



Dark grey



Terracotta



Moka



Rosso bordeaux



Rosso



Rosa cipria



Bruciato



Carta da zucchero



Grigio blu



Verde pallido



Verde malva



Grigio aston



Celeste



Turchese



Grigio Garda



Blu cobalto



Oceano



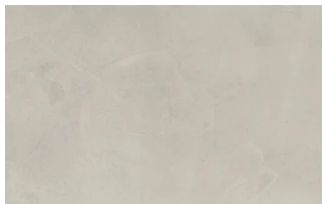
Grigio antracite



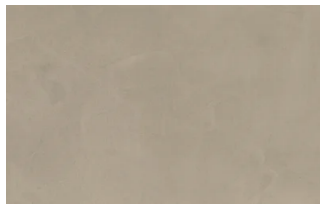
Black

UP SURFACES

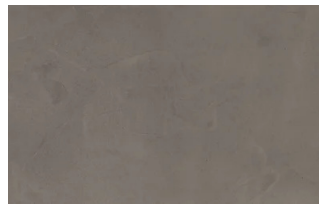
Concrete effect lacquers



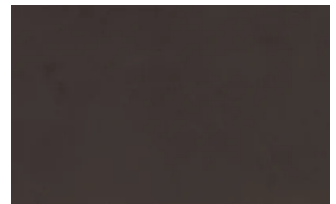
Perla



Argilla

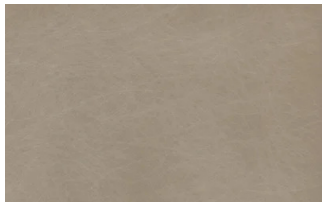


Grafite



Lava

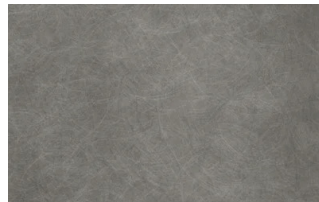
Metal effect lacquers



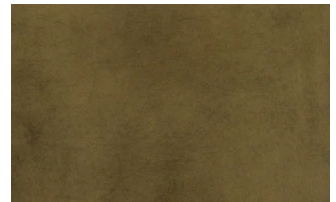
Nichel



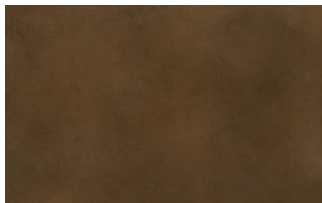
Piombo



Titanio



Ossido ottone

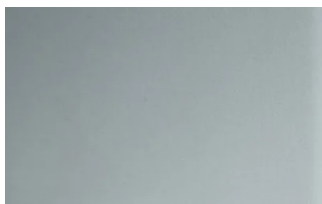


Ossido bronzo

Glasses

TRASPARENT GLASSES

Trasparent glasses



Extralight glass

Textured finishes

TEXTURED FINISHES

Textured finishes



Bianco



Olmo white



malta ghiaccio



malta tortora

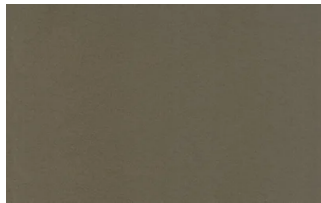
Metals

METALS 1

Metals 1



Black



Titanium



Bianco