

Chairs

# Joelle

Simplicity and comfort. Joelle is an upholstered chair with a back with remarkable lumbar support. The linear base is expertly softened around the perimeter.



## STRUCTURE AND COATINGS

Joelle is a chair with a solid wood frame and upholstery in fabric, leather or faux leather. You can also decide to make the back of the back with a different material or finish than the front. Joelle's simplicity also makes it easy to match with other chairs. For example, if you like to mix chairs around the table, we suggest matching it with the Gulp chair.



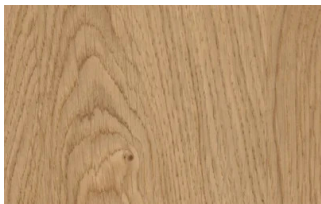
## FINISHES

Different fronts and backs for the Joelle chair allow you to play with fabric/fabric, fabric/ecoleather, woven fabric/ecoleather, or woven faux leather/ecoleather.

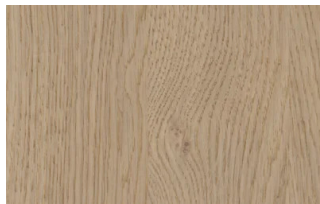
### Woods

#### WOODS 1

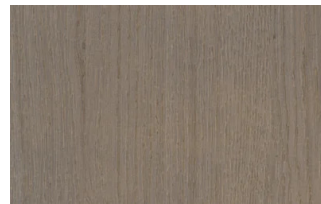
##### Woods 1



Natural oak



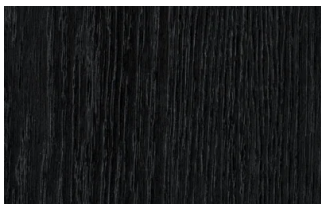
Oak visone



Oak cenere



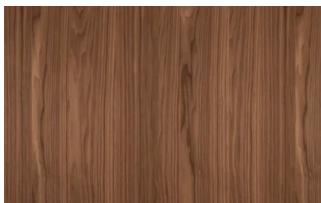
Oak castoro



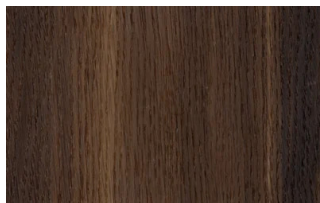
Oak carbone

#### WOODS 2

##### Woods 2



Canaletto walnut

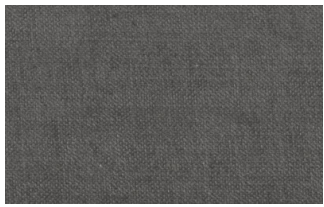


Heat-treated oak

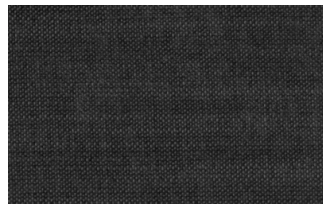
### Fabrics

#### BASIC

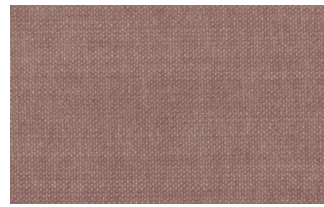
##### X370



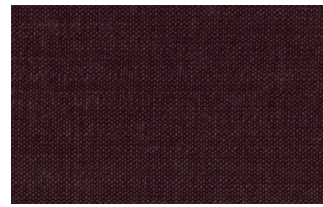
3



4



9



10



23

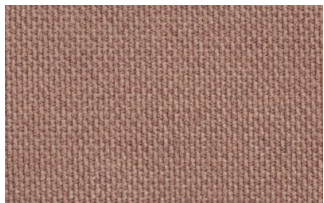


29

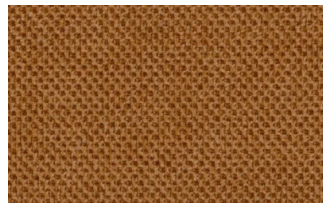


32

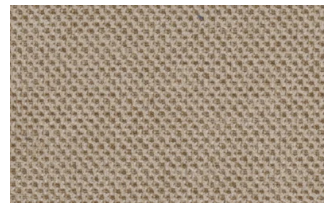
## Relax



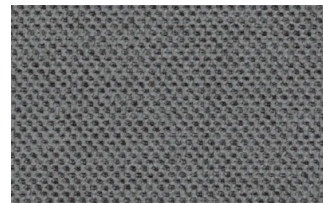
5



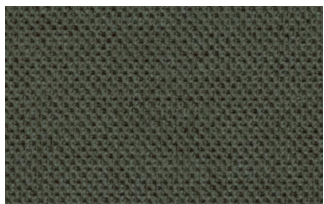
20



25



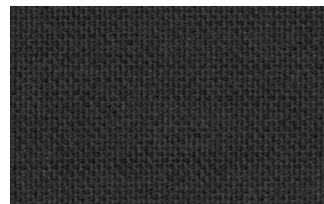
53



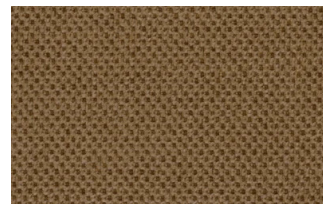
62



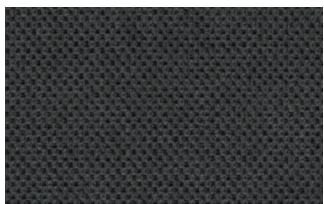
66



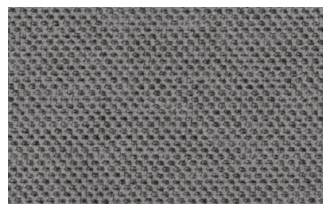
74



81

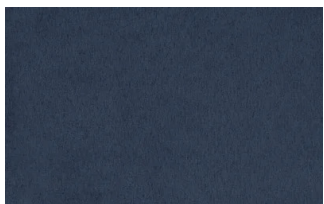


96

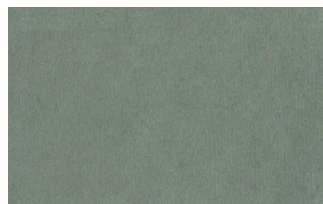


103

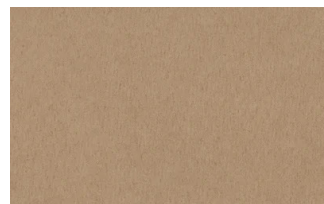
## Divina



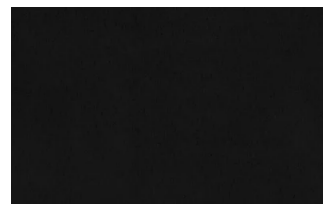
15



19



21



22



34



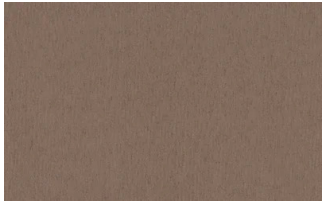
46



49



50



76



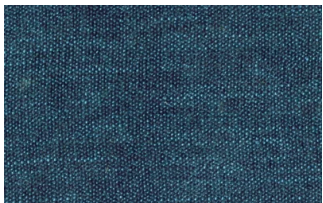
88



561

## START

### Scoop



6



7



9



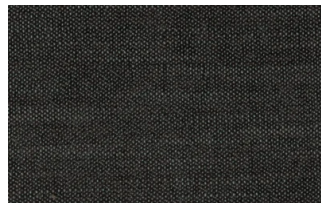
25



31



59

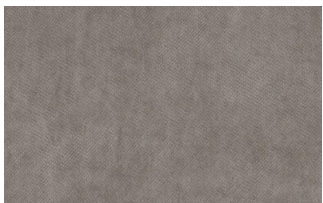


104

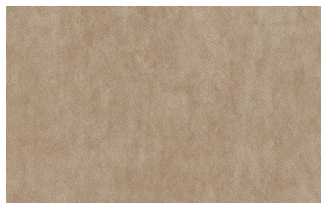


561

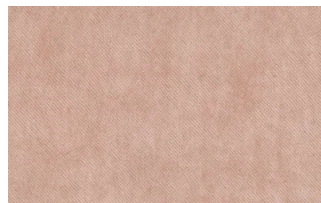
### Stropiccio



4



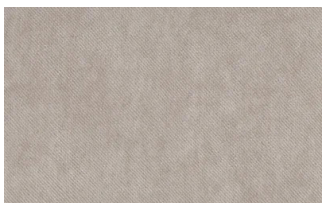
6



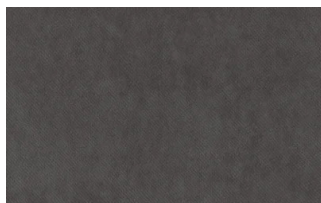
8



17



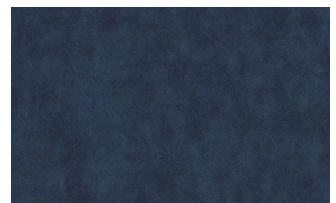
19



20



22

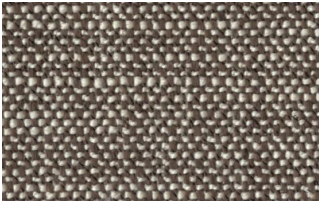


23

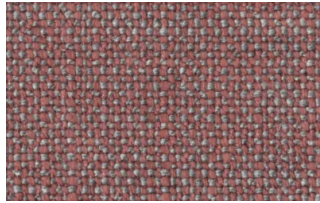


30

## Nodone



1302



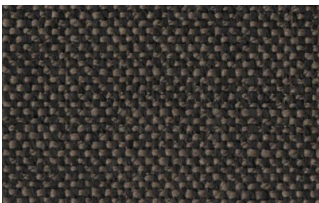
1307



1308



1309



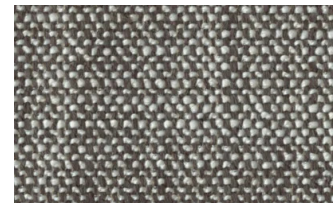
1310



1311

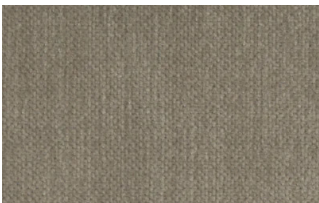


1313

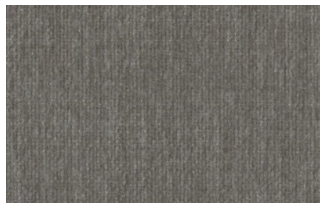


1314

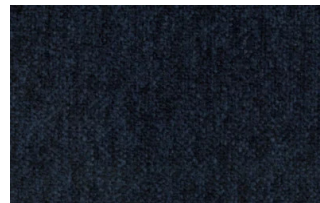
## R Flair



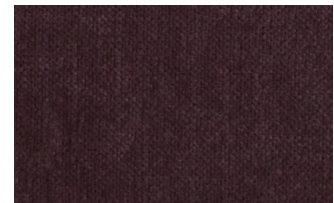
P321-6200-039



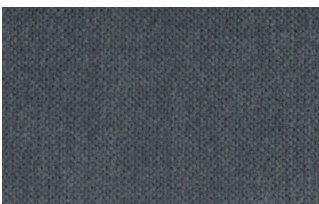
P321-6200-901



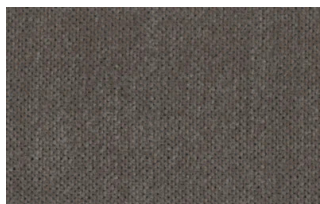
P321-6300-419



P321-6300-503



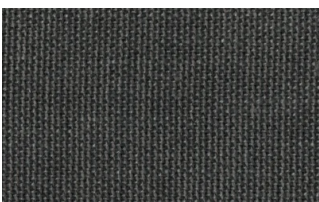
P321-6300-988



P321-6300-996

## EXTRA

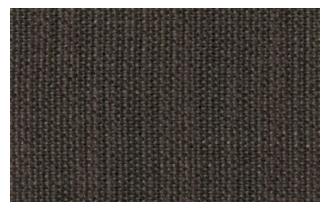
### Anice



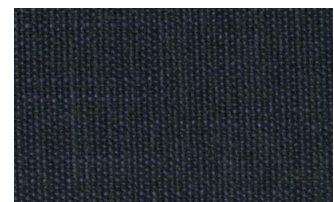
1



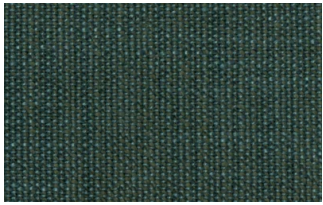
2



3



4



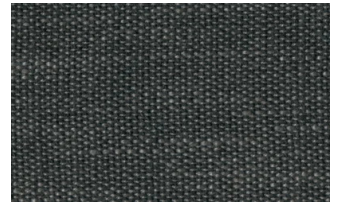
5



6



7

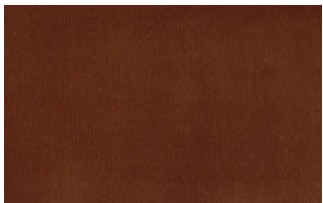


8

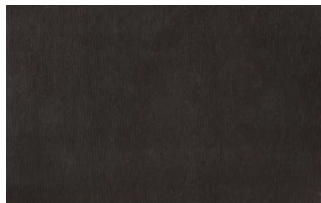


9

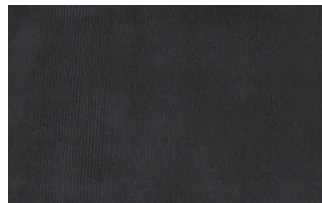
## Lovely



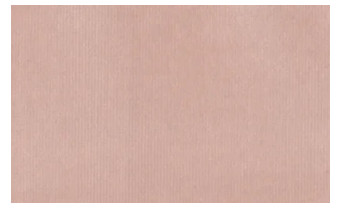
6



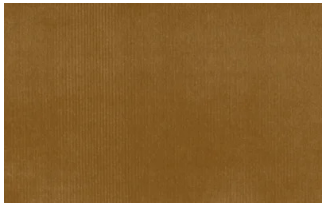
10



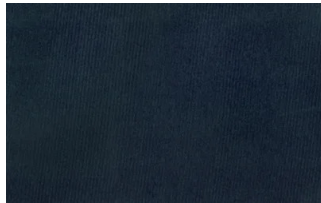
19



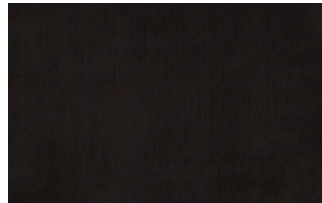
22



27



31



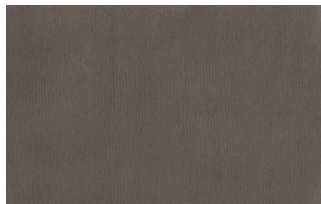
36



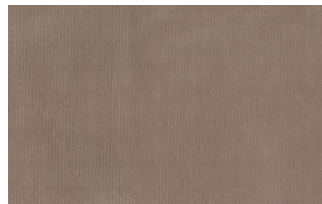
102



113



200

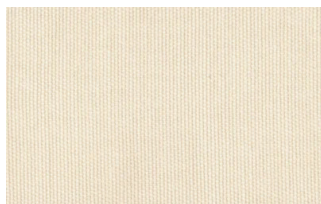


202

## Cosme



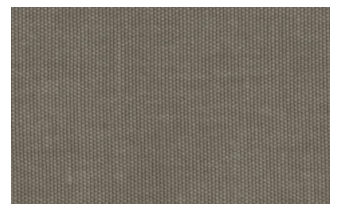
e200



e202



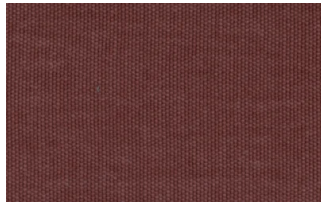
e205



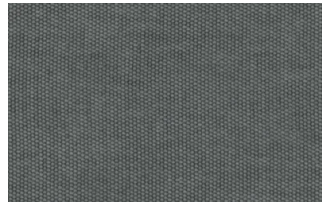
e206



e209



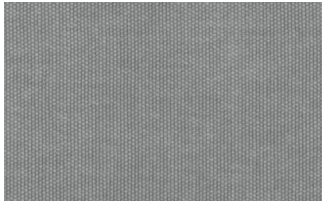
e220



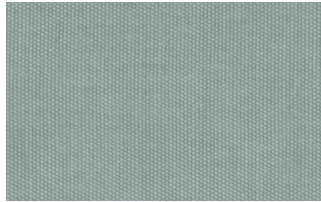
e232



e234



e236



e240

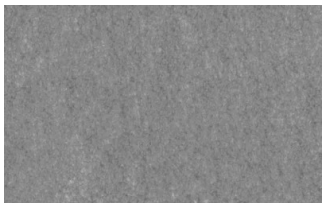


e241

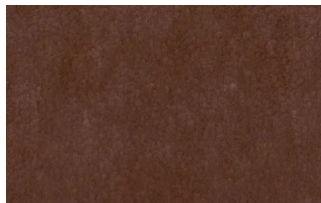


e244

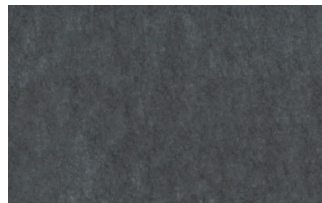
## Soda



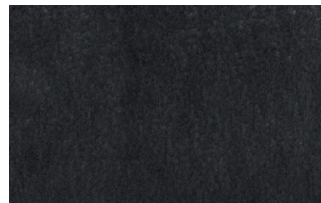
29



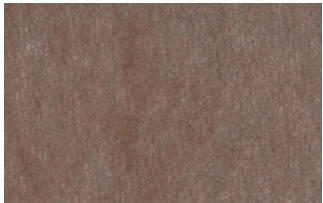
30



39



41



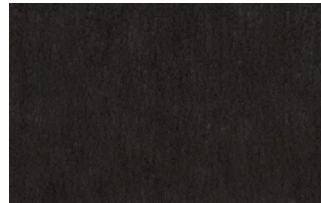
56



62



74



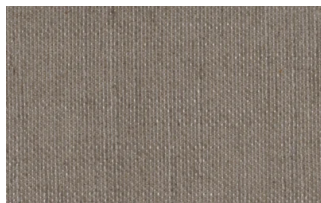
104

## LIGHT

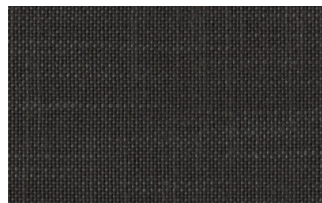
### Lima



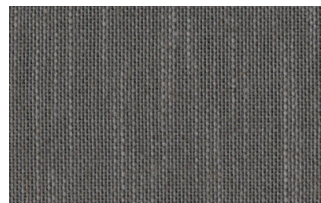
2



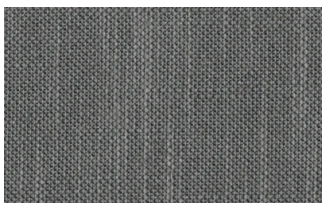
5



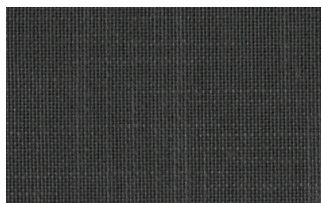
10



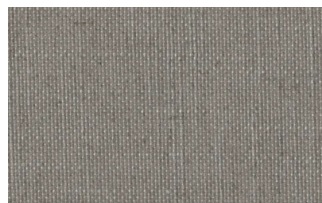
12



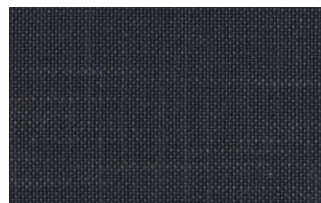
14



16

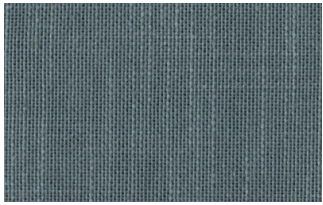


23

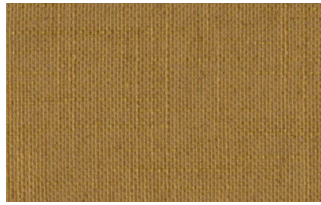


29





31



43

## Mimi



A3004



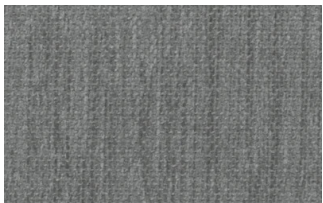
A3005



A3006



A3014



A3018

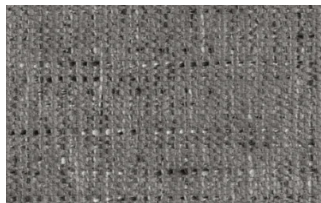


A3023

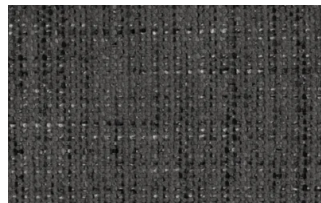
## Memphis



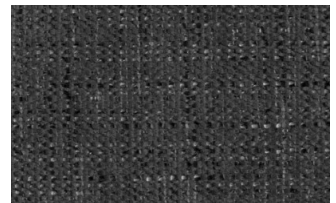
1



6



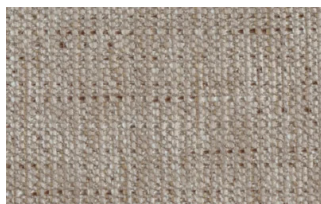
10



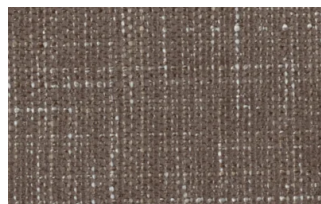
11



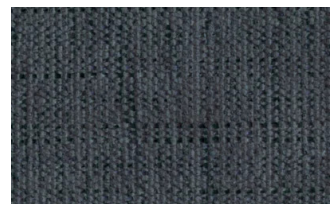
13



14



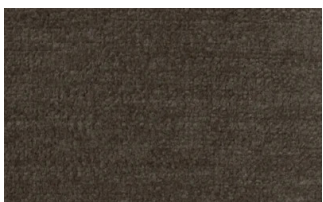
15



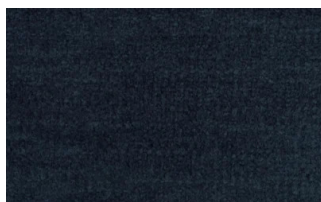
16

## SUPER

### Hylemt



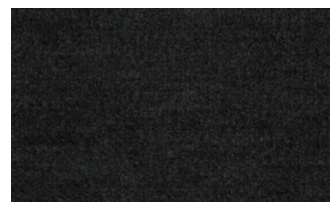
25



102



109



117



121



204



207

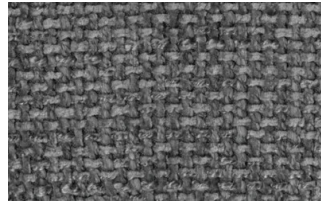
## Axum



3



11



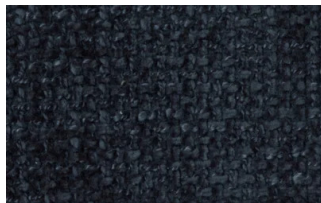
12



18



21



23



29



30

## Barnum Unito



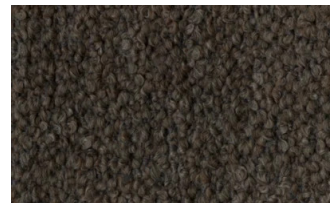
1 bianco



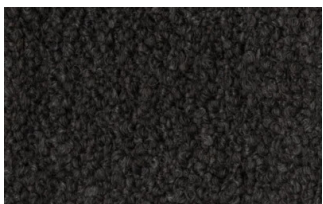
2 corda



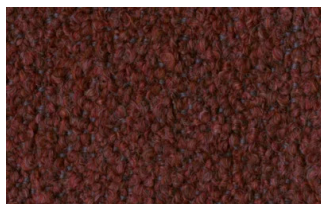
9 bosco



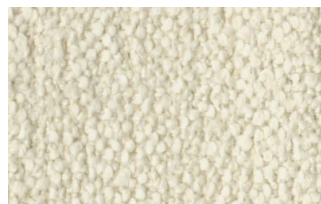
10 piombo



13 lavagna



23 bruciato



24 lana

## Leathers

### K LEATHERS

Leather



200



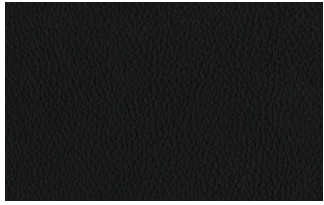
202



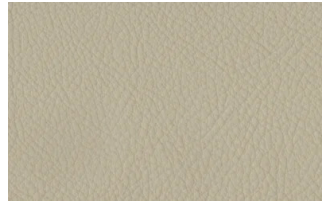
204



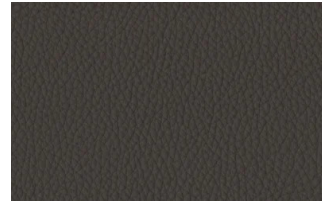
206



207



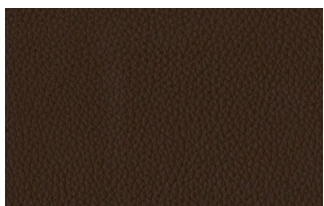
208



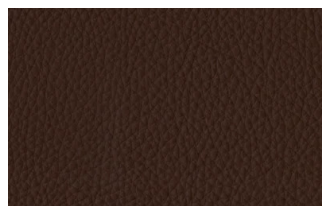
211



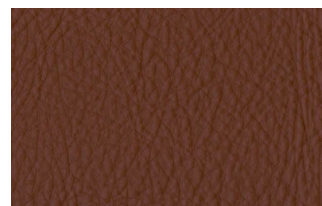
214



217



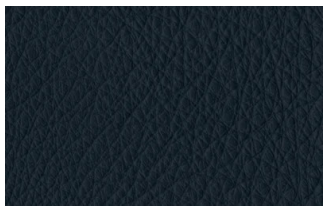
224



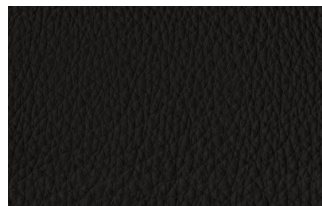
228



234



274



298



301

## W LEATHERS

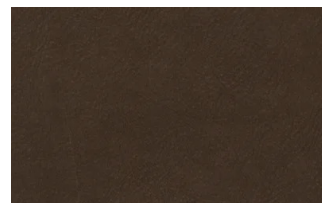
### Nabuk



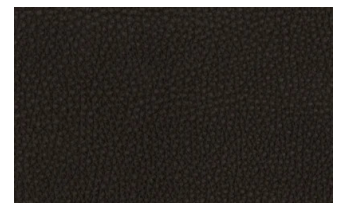
Creta



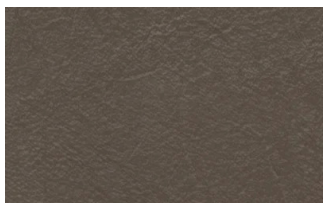
Camel



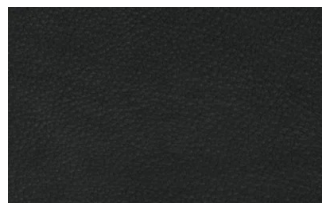
marrone



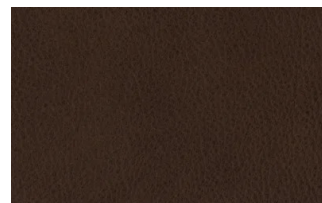
Testa di moro



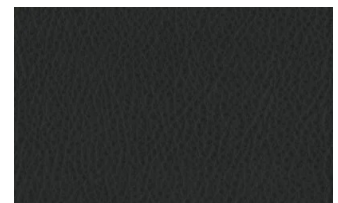
Seppia



Black



Hard leather



Grigio

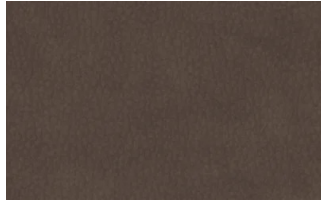
Ecoleathers

## EXTRA ECO-LEATHERS

Vintage eco-leather



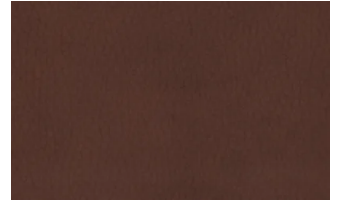
2



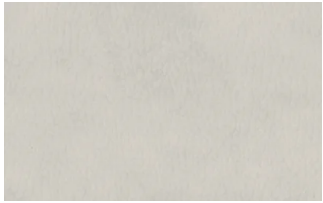
3



3 intreccio



4



6



7



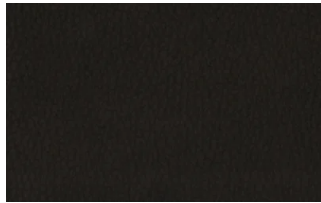
7 intreccio



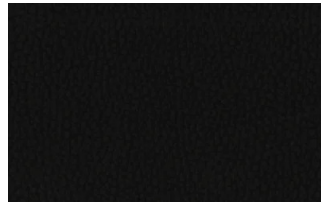
8



8 intreccio



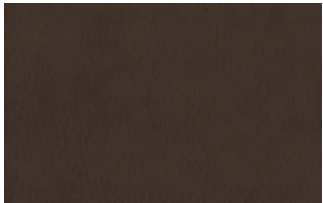
9



14



19



22